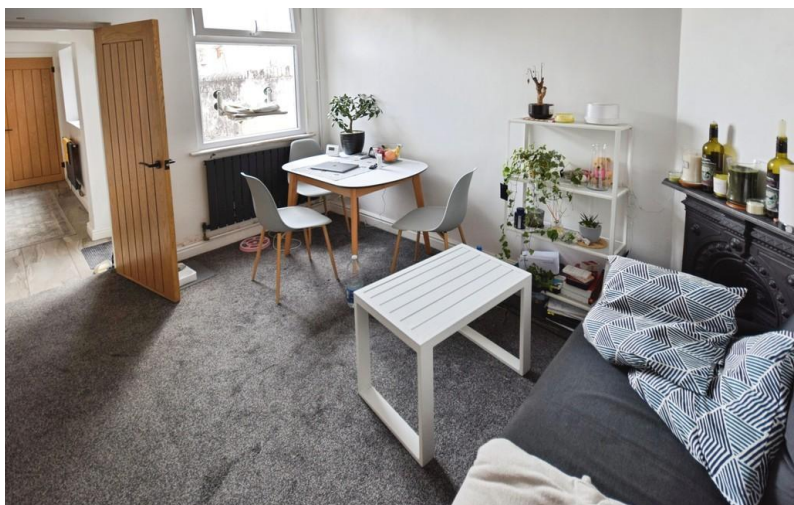


TO LET



Madison Street, Tunstall, Stoke-on-Trent

2 Bedrooms, 1 Bathroom, Mid Terraced House

£750 pcm



Madison Street, Tunstall, Stoke-on-Trent

Mid Terraced House,
2 bedroom, 1 bathroom

£750 pcm

Date available: 13th September 2025

Deposit: £865

Unfurnished

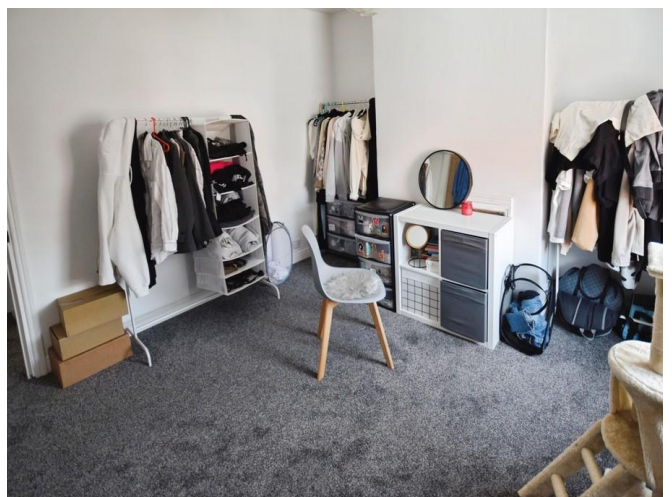
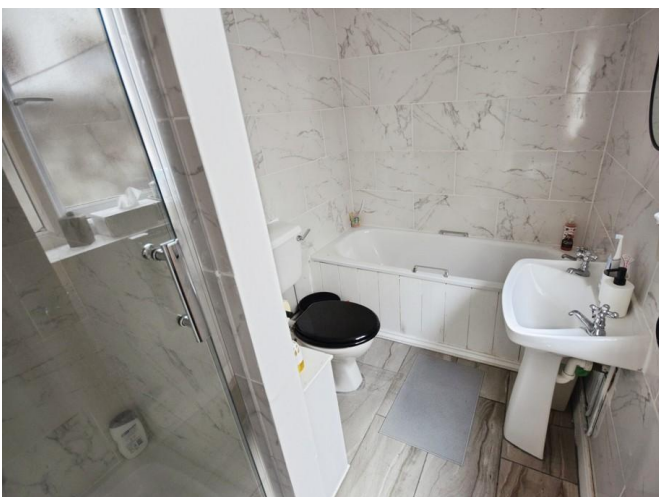
Council Tax band: A

- 2 bedroom house
- 2 Reception rooms
- Kitchen
- Bathroom
- Walking distance from shops
- Council tax band A
- Utility area

SUPERB ORDER THROUGHOUT. Martin and co offer for rent this 2 bedroom terraced house located in a popular area within walking distance from Tunstall town centre and a short drive from Hanley town centre. The property comprises 2 reception rooms, kitchen, utility area and bathroom to the ground floor and 2 double bedrooms to the first floor.

Energy Efficiency Rating

	Current	Potential
Very energy efficient - lower running costs		
(92-100) A		
(81-91) B		88
(69-80) C		
(55-68) D	57	
(39-54) E		



Martin & Co Stoke on Trent

12 Albion Street • Stoke-On-Trent • ST1 1QH

T: 01782 262880 • E: stokeontrent@martinco.com <http://www.martinco.com>

01782 262880



Accuracy: References to the Tenure of a Property are based on information supplied by the Seller. The Agent has not had sight of the title documents. A Buyer is advised to obtain verification from their Solicitor. Items shown in photographs including but not limited to carpets, fixtures and fittings are not included unless specifically mentioned within the sales particulars. They may however be available by separate negotiation. Buyers must check the availability of any property and make an appointment to view before embarking on any journey to see a property. No person in the employment of the agent has any authority to make any representation about the property, and accordingly any information given is entirely without responsibility on the part of the agents, sellers(s) or lessors(s). Any property particulars are not an offer or contract, nor for part of one. **Sonic / laser Tape:** Measurements taken using a sonic / laser tape measure may be subject to a small margin of error. **All Measurements:** All Measurements are Approximate. **Services Not tested:** The Agent has not tested any apparatus, equipment, fixtures and fittings or services and so cannot verify that they are in working order or fit for the purpose. A Buyer is advised to obtain verification from their Solicitor or Surveyor.