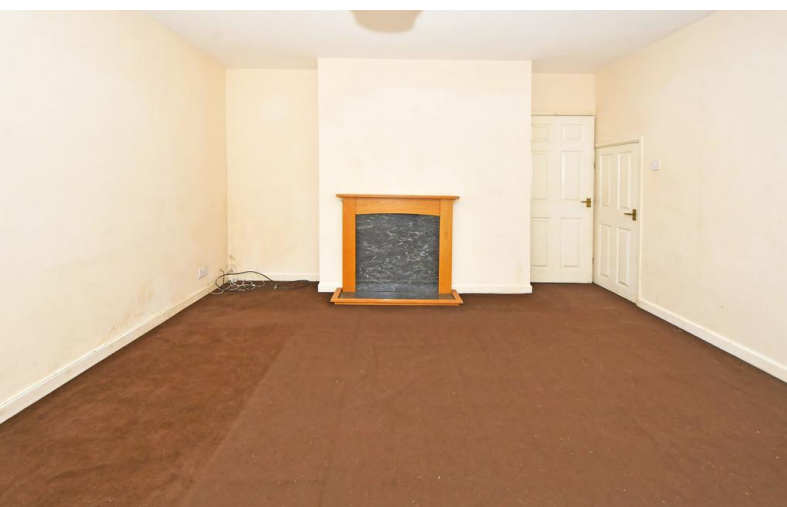


FOR SALE



Darrall Gardens, Trent Vale, Stoke-on-Trent

3 Bedrooms, 1 Bathroom, Mid Terraced House

Asking Price Of £132,950





Darrall Gardens, Trent Vale, Stoke-on-Trent

3 Bedrooms, 1 Bathroom

Asking Price Of £137,950

- Mid Town House
- Three Bedrooms
- Family Bathroom
- Gas Central Heating
- Upvc Double Glazing

HALL 5' 3" x 3' 9" (1.6m x 1.14m) Wooden door to the front elevation, central heating radiator, carpet to floor

LOUNGE 15' 11" x 12' 5" (4.85m x 3.78m) Upvc double glazed window to the front elevation, TV aerial point, chimney breast, wood Adam style fireplace, central heating radiator, under stairs storage, carpet to floor

KITCHEN/DINER 12' 4" x 9' 2" (3.76m x 2.79m) Upvc double glazed window to the rear elevation, wooden door with frosted glass panel, range of wall and base units with worktops over, stainless steel single sink, built in oven and hob, stainless steel extractor hood, space and plumbing for washing machine, built in cupboards x 3 with one housing the central heating boiler, central heating radiator, vinyl flooring

STAIRS AND LANDING Loft access, carpet to floor

BEDROOM 12' 7" x 10' 8" (3.84m x 3.25m) Upvc double glazed window to the rear elevation, central heating radiator, wardrobe, carpet to floor

BATHROOM Upvc double glazed frosted window x 2 to the rear elevation, 3 piece suite in white with shower over with screen, central heating radiator, part tiled walls, vinyl flooring





BEDROOM 14' 8" x 8' 7" (4.47m x 2.62m) Upvc double glazed window to the front elevation, central heating radiator, carpet to floor

BEDROOM 10' 5" x 7' 0" (3.18m x 2.13m) Upvc double glazed window to the front elevation, central heating radiator, carpet to floor

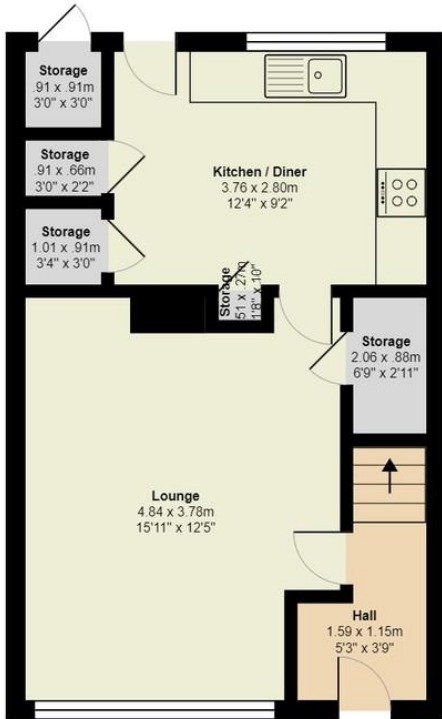
FRONT GARDEN Lawn area, fence and hedge to the side

REAR GARDEN Lawn area, paved patio area, enclosed by fence and hedges, paved walk way

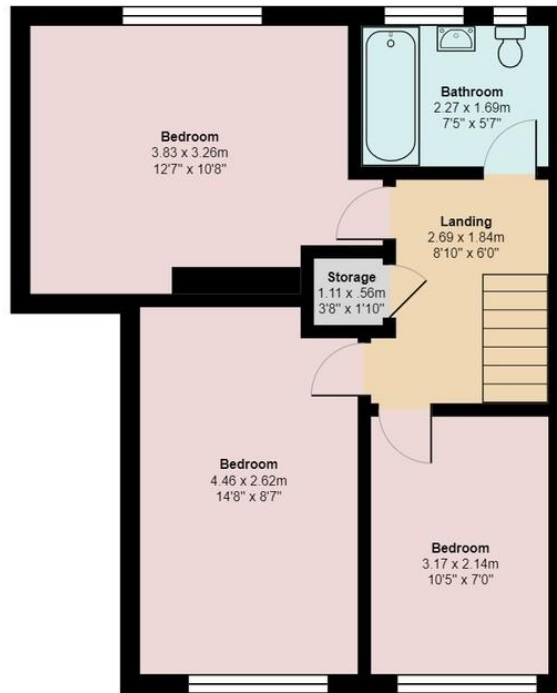








Ground Floor



First Floor

All measurements are approximate and for display purposes only

Martin & Co Newcastle under Lyme
 12 Albion Street • Stoke-On-Trent • ST1 1QH
 T: 01782 453 001 • E: newcastleunderlyme@martinco.com

01782 453 001
<http://www.martinco.com>



Accuracy: References to the Tenure of a Property are based on information supplied by the Seller. The Agent has not had sight of the title documents. A Buyer is advised to obtain verification from their Solicitor. Items shown in photographs including but not limited to carpets, fixtures and fittings are not included unless specifically mentioned within the sales particulars. They may however be available by separate negotiation. Buyers must check the availability of any property and make an appointment to view before embarking on any journey to see a property. No person in the employment of the agent has any authority to make any representation about the property, and accordingly any information given is entirely without responsibility on the part of the agents, sellers(s) or lessors(s). Any property particulars are not an offer or contract, nor for mpart of one. **Sonic / laser Tape:** Measurements taken using a sonic / laser tape measure may be subject to a small margin of error. **All Measurements:** All Measurements are Approximate. **Services Not tested:** The Agent has not tested any apparatus, equipment, fixtures and fittings or services and so cannot verify that they are in working order or fit for the purpose. A Buyer is advised to obtain verification from their Solicitor or Surveyor.