

**FOR SALE**



## **Keele House, The Midway, Newcastle**

**1 Bedroom, 1 Bathroom, Apartment**

**Asking Price Of £50,000**



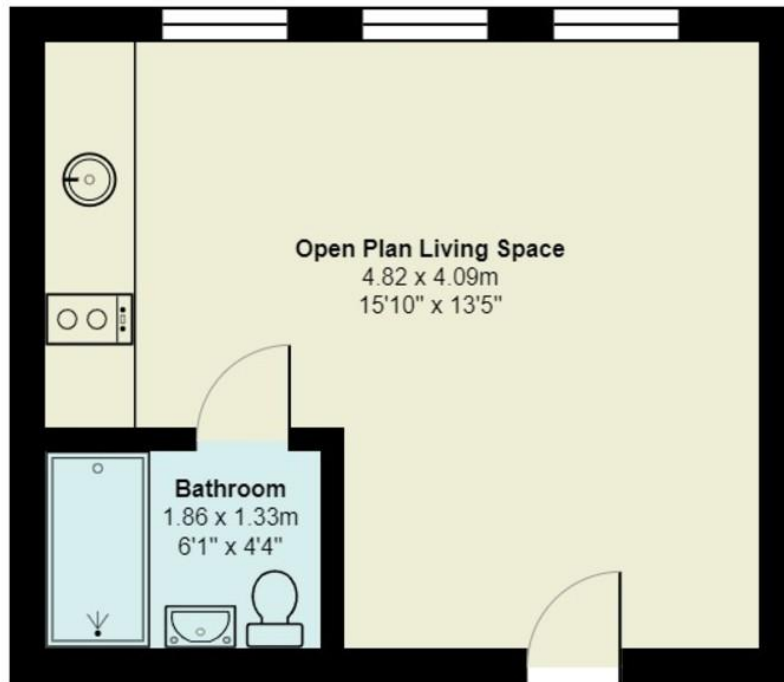
- Pre Let Investment Opportunity
- Student Accommodation
- One Bedroom
- On Site Gym
- Town Centre Location
- Close To Royal Stoke Hospital
- Popular Location

LOUNGE/KITCHEN/BEDROOM 15' 10" x 13' 5" (4.83m x 4.09m) Open plan, Upvc double glazed window to the side elevation, wall heater, range of wall and base units, built in microwave, stainless steel single sink, wood laminate flooring

SHOWER ROOM 6' 1" x 4' 4" (1.85m x 1.32m) 3 piece suite in white including shower cubicle, wall heater, smoke alarm, tiled flooring

Energy Efficiency Rating		Current	Potential
Very energy efficient - lower running costs			
(92-100)	<b>A</b>		
(81-91)	<b>B</b>		
(69-80)	<b>C</b>	78	78
(55-68)	<b>D</b>		
(39-54)	<b>E</b>		
(21-38)	<b>F</b>		
(1-20)	<b>G</b>		
Not energy efficient - higher running costs			
England, Scotland & Wales		EU Directive 2002/91/EC	





## First Floor

All measurements are approximate and for display purposes only

### Martin & Co Newcastle under Lyme

12 Albion Street • Stoke-On-Trent • ST1 1QH  
T: 01782 453 001 • E: newcastleunderlyme@martinco.com

**01782 453 001**  
<http://www.martinco.com>



**Accuracy:** References to the Tenure of a Property are based on information supplied by the Seller. The Agent has not had sight of the title documents. A Buyer is advised to obtain verification from their Solicitor. Items shown in photographs including but not limited to carpets, fixtures and fittings are not included unless specifically mentioned within the sales particulars. They may however be available by separate negotiation. Buyers must check the availability of any property and make an appointment to view before embarking on any journey to see a property. No person in the employment of the agent has any authority to make any representation about the property, and accordingly any information given is entirely without responsibility on the part of the agents, sellers(s) or lessors(s). Any property particulars are not an offer or contract, nor for part of one. **Sonic / Laser Tape:** Measurements taken using a sonic / Laser tape measure may be subject to a small margin of error. **All Measurements:** All Measurements are Approximate. **Services Not tested:** The Agent has not tested any apparatus, equipment, fixtures and fittings or services and so cannot verify that they are in working order or fit for the purpose. A Buyer is advised to obtain verification from their Solicitor or Surveyor.