

TO LET



Clayworks, Hanley

1 Bedroom, 1 Bathroom, Studio Apartment

£875 pcm



Clayworks, Hanley

1 Bedroom, 1 Bathroom

£875 pcm

Date available: 1st June 2026

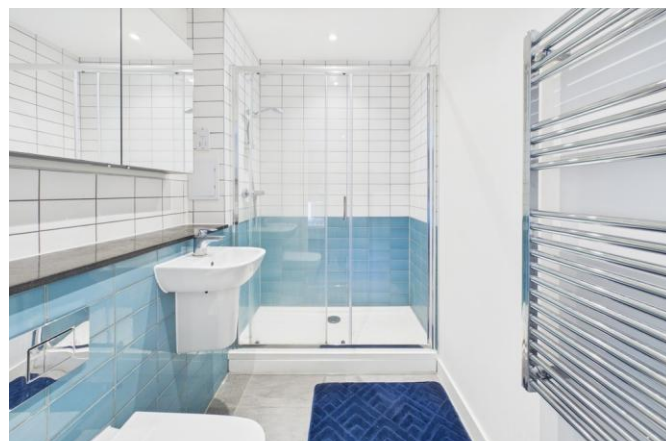
Deposit: £1,009

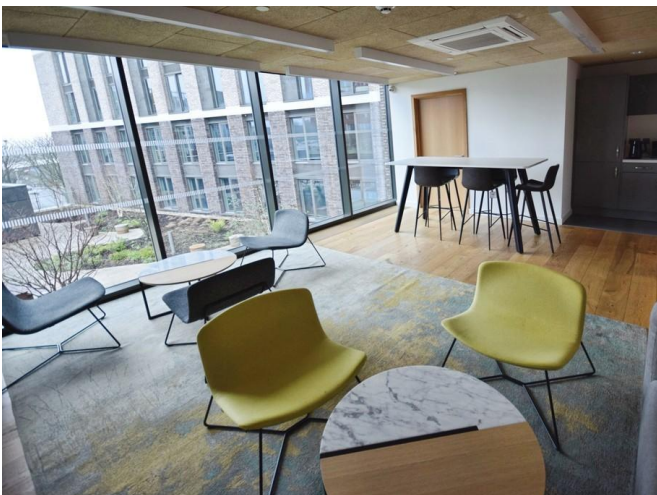
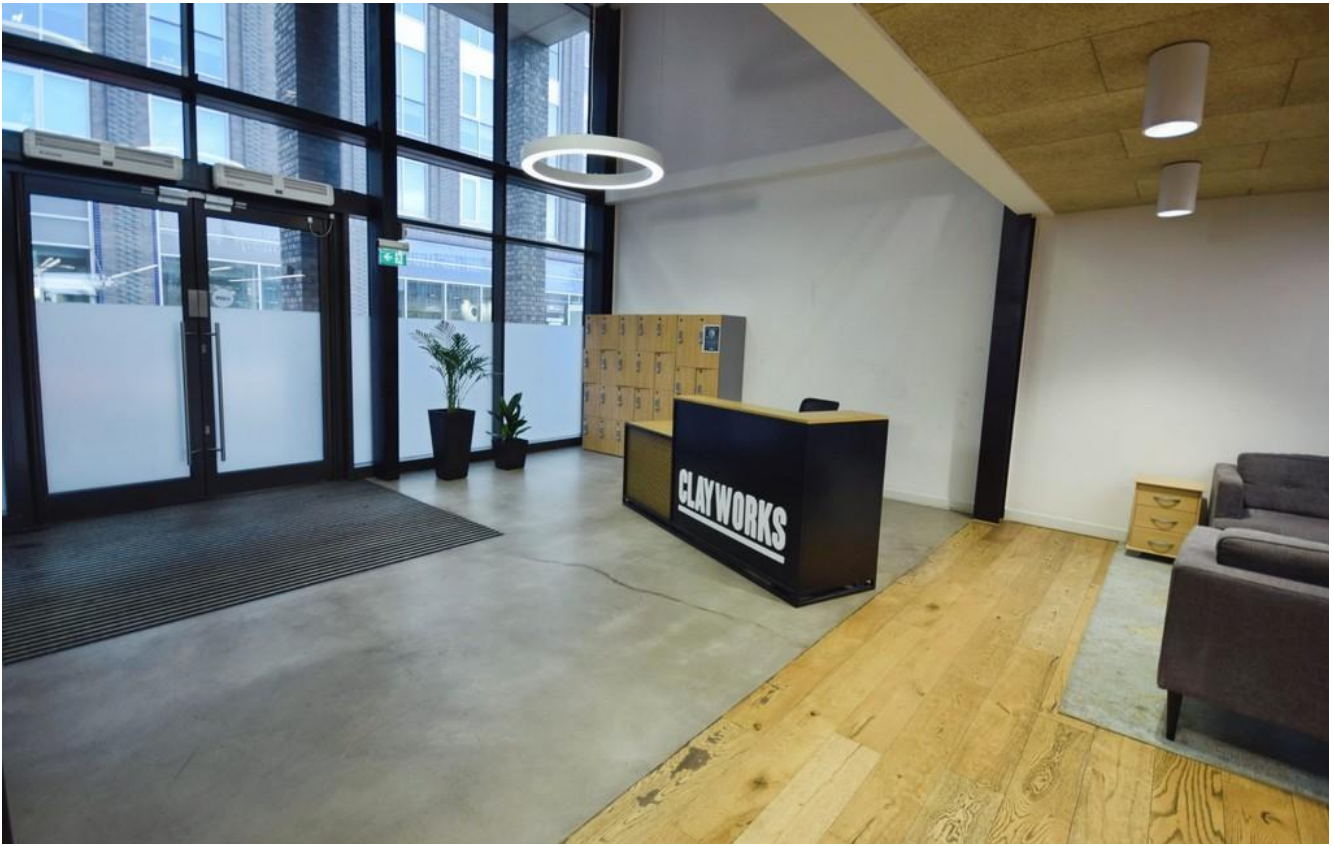
Furnished

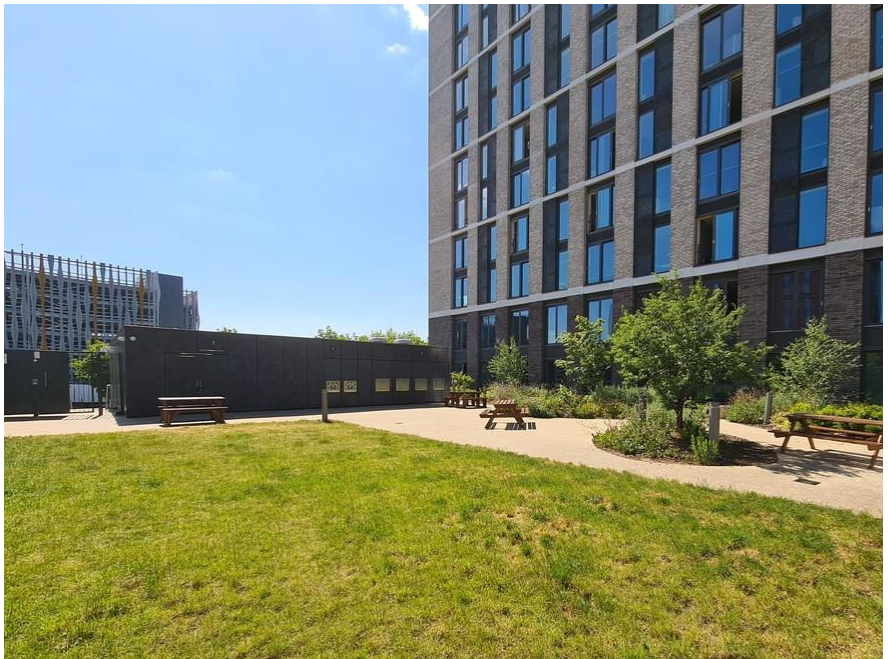
Council Tax band: A

- Furnished studio apartment
- Top floor
- open plan lounge and kitchen
- Partially separated bedroom area
- Shower room
- lifts to all floors
- Private garden and sun terrace

STUNNING TOP FLOOR FURNISHED STUDIO APARTMENT. Martin and co offer for rent this stunning top floor furnished studio apartment located in the prestigious Clayworks development within walking distance from Hanley town centre. Clayworks is a highly sought after block of flats offering a residential service manager, weekend concierge and has the benefit of private gardens, sun terrace, multi function room and lifts to all floors. The flat comprises open plan lounge and kitchen with patio door and Juliette balcony, Bedroom area and a shower room.







%epcGraph_c_1_441%





Martin & Co Stoke on Trent

12 Albion Street • Stoke-On-Trent • ST1 1QH

T: 01782 262880 • E: stokeontrent@martinco.com <http://www.martinco.com>

01782 262880



Accuracy: References to the Tenure of a Property are based on information supplied by the Seller. The Agent has not had sight of the title documents. A Buyer is advised to obtain verification from their Solicitor. Items shown in photographs including but not limited to carpets, fixtures and fittings are not included unless specifically mentioned within the sales particulars. They may however be available by separate negotiation. Buyers must check the availability of any property and make an appointment to view before embarking on any journey to see a property. No person in the employment of the agent has any authority to make any representation about the property, and accordingly any information given is entirely without responsibility on the part of the agents, sellers(s) or lessors(s). Any property particulars are not an offer or contract, nor for part of one. **Sonic / laser Tape:** Measurements taken using a sonic / laser tape measure may be subject to a small margin of error. **All Measurements:** All Measurements are Approximate. **Services Not tested:** The Agent has not tested any apparatus, equipment, fixtures and fittings or services and so cannot verify that they are in working order or fit for the purpose. A Buyer is advised to obtain verification from their Solicitor or Surveyor.