

TO LET



Clayworks, Hanley

2 Bedrooms, 2 Bathroom, Apartment

£920 pcm



Clayworks, Hanley

Apartment,
2 bedroom, 2 bathroom

£920 pcm

Date available: 7th December 2024

Deposit: £1,061

Unfurnished

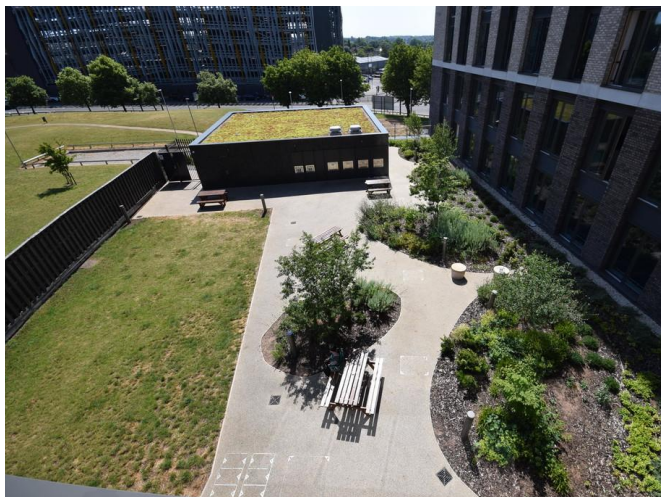
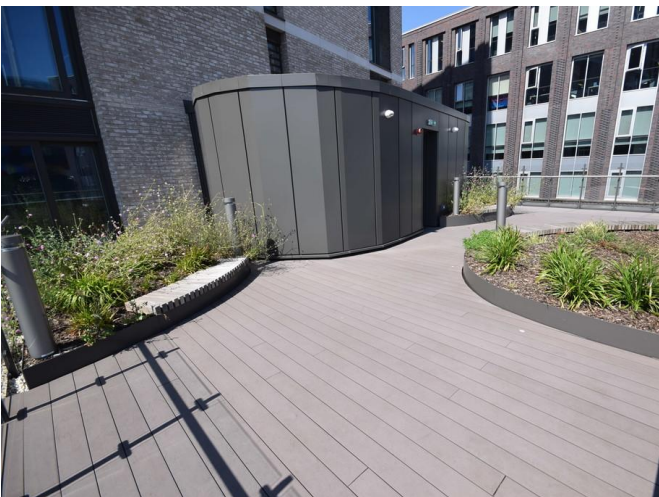
Council Tax band: B

- 8th floor apartment
- Hanley Centre
- Two Double Bedrooms
- Open plan lounge and kitchen
- Ensuite Shower Room
- Sun terrace and garden
- Lifts to all floors

Martin & Co are pleased to bring to the market this stunning 2 bedroom apartment at the prestigious Clayworks development which is located in the heart of Hanley within walking distance of the town centre. Clayworks offers all residents lifts to all floors, a daytime service manager, co-working spaces, a roof terrace and a private, well landscaped garden, not to mention the fantastic views of the city.

This apartment in brief comprises of an open plan kitchen/dining/living area with dishwasher, fridge freezer and washer dryer in separate utility cupboard, 2 double bedrooms, ensuite shower room and a bathroom.

Energy Efficiency Rating		Current	Potential
Very energy efficient - lower running costs			
(92-100)	A		
(81-91)	B	85	85
(69-80)	C		
(55-68)	D		
(39-54)	E		



Martin & Co Stoke on Trent

12 Albion Street • Stoke-On-Trent • ST1 1QH

T: 01782 262880 • E: stokeontrent@martinco.com

01782 262880

<http://www.martinco.com>



Accuracy: References to the Tenure of a Property are based on information supplied by the Seller. The Agent has not had sight of the title documents. A Buyer is advised to obtain verification from their Solicitor. Items shown in photographs including but not limited to carpets, fixtures and fittings are not included unless specifically mentioned within the sales particulars. They may however be available by separate negotiation. Buyers must check the availability of any property and make an appointment to view before embarking on any journey to see a property. No person in the employment of the agent has any authority to make any representation about the property, and accordingly any information given is entirely without responsibility on the part of the agents, sellers(s) or lessors(s). Any property particulars are not an offer or contract, nor for part of one. **Sonic / laser Tape:** Measurements taken using a sonic / laser tape measure may be subject to a small margin of error. **All Measurements:** All Measurements are Approximate. **Services Not tested:** The Agent has not tested any apparatus, equipment, fixtures and fittings or services and so cannot verify that they are in working order or fit for the purpose. A Buyer is advised to obtain verification from their Solicitor or Surveyor.