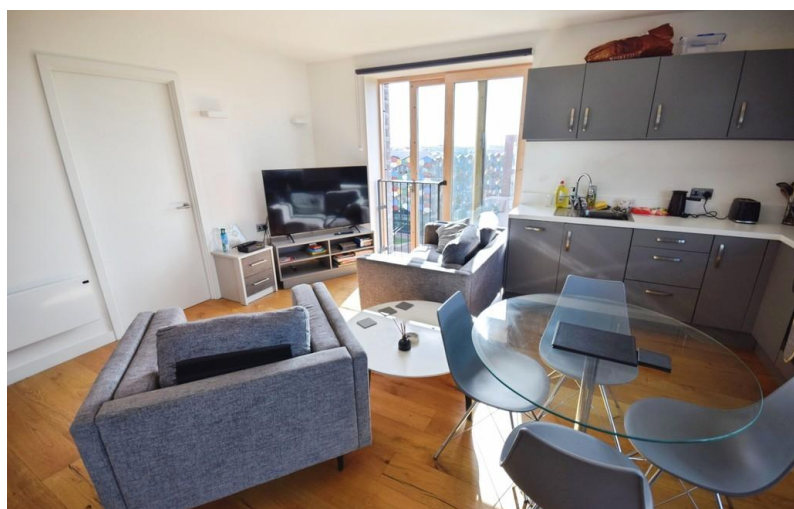


TO LET



Clayworks, Hanley

2 Bedrooms, 2 Bathroom, Apartment

£1,075 pcm



Clayworks, Hanley

2 Bedrooms, 2 Bathroom

£1,075 pcm

Date available: 31st May 2025

Deposit: £1,240

Furnished

Council Tax band: B

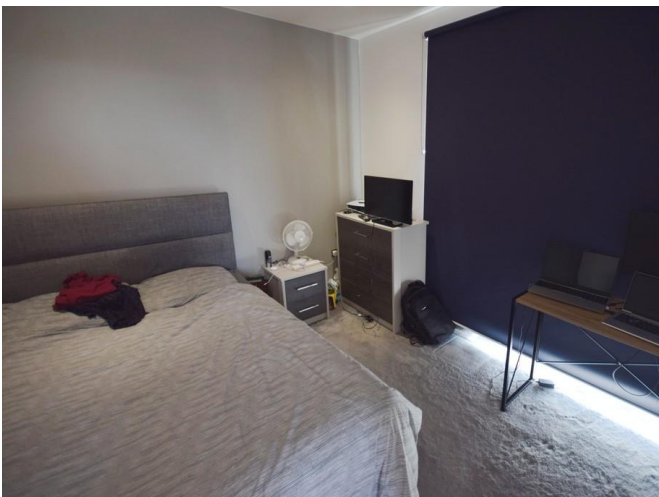
- Furnished 8th floor flat
- Open plan lounge and kitchen
- 2 Double bedrooms
- En suite shower room
- Bathroom
- Daytime residential service manager
- Council tax band B

8TH FLOOR APARTMENT WITH STUNNING VIEWS.

Martin & Co are pleased to bring to the market this stunning furnished corner apartment at the highly sought after Clayworks development in the heart of Hanley. Clayworks offers all residents a daytime resident service manager, co-working spaces, a roof terrace and a private landscaped courtyard garden area, not to mention fantastic views of the city and lifts to all floors.

The apartment which is on the 8th floor in brief comprises of an open plan kitchen living area, 2 double bedrooms with fitted wardrobes, en suite shower room and a 'Jack and Jill' style bathroom. Zero deposit scheme available.

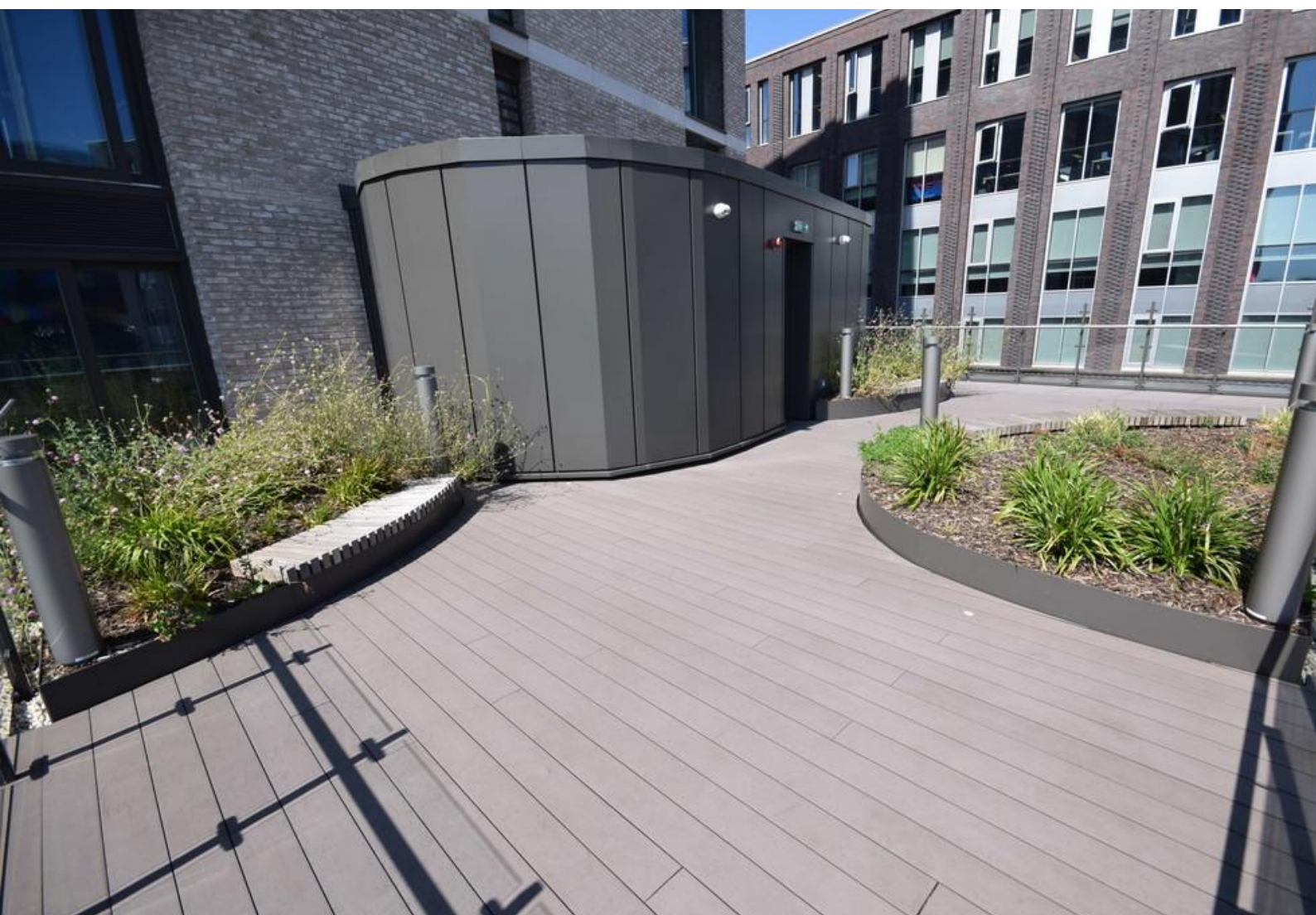






Energy Efficiency Rating

	Current	Potential
Very energy efficient - lower running costs		
(92-100) A		
(81-91) B	84	84
(69-80) C		
(55-68) D		



Martin & Co Stoke on Trent

12 Albion Street • Stoke-On-Trent • ST1 1QH

T: 01782 262880 • E: stokeontrent@martinco.com <http://www.martinco.com>

01782 262880



Accuracy: References to the Tenure of a Property are based on information supplied by the Seller. The Agent has not had sight of the title documents. A Buyer is advised to obtain verification from their Solicitor. Items shown in photographs including but not limited to carpets, fixtures and fittings are not included unless specifically mentioned within the sales particulars. They may however be available by separate negotiation. Buyers must check the availability of any property and make an appointment to view before embarking on any journey to see a property. No person in the employment of the agent has any authority to make any representation about the property, and accordingly any information given is entirely without responsibility on the part of the agents, sellers(s) or lessors(s). Any property particulars are not an offer or contract, nor for part of one. **Sonic / laser Tape:** Measurements taken using a sonic / laser tape measure may be subject to a small margin of error. **All Measurements:** All Measurements are Approximate. **Services Not tested:** The Agent has not tested any apparatus, equipment, fixtures and fittings or services and so cannot verify that they are in working order or fit for the purpose. A Buyer is advised to obtain verification from their Solicitor or Surveyor.