

TO LET



Mill View, Ball Green

3 Bedrooms, 2 Bathroom, Semi-Detached House

£975 pcm



Mill View, Ball Green

3 Bedrooms, 2 Bathroom

£975 pcm

3 BEDROOM SEMI DETACHED HOUSE. Martin & Co are delighted to offer this 3 bedroom semi detached house located in a sought after cul de sac within a popular residential area close to shops and regular bus routes to Hanley Town Centre. The property comprises of one reception room and a kitchen to the ground floor with 3 bedrooms, bathroom and ensuite shower room on the first floor. The property also benefits from a drive to the side giving access to the garage with gardens front and rear.

Date available: 27th June 2026

Deposit: £1,125

Unfurnished

Council Tax band: B

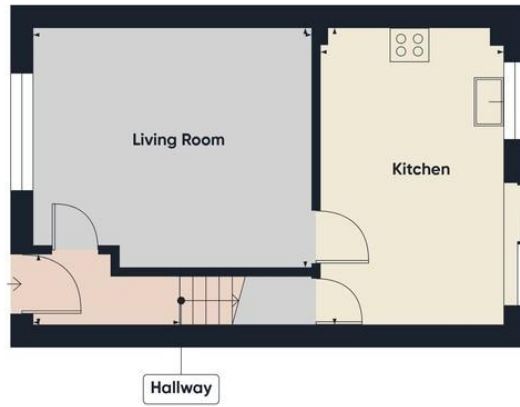
- Semi Detached House
- Lounge
- Kitchen
- 3 bedrooms
- Popular area
- Family bathroom
- En suite shower room



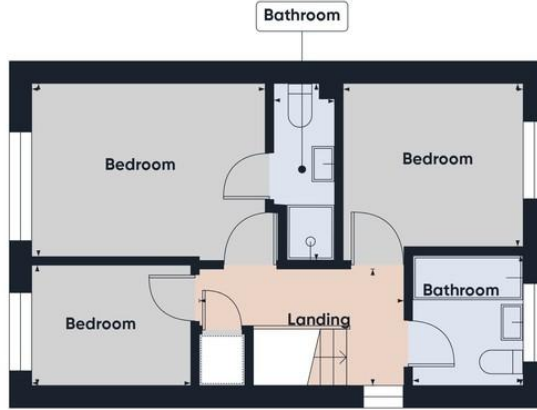




Energy Efficiency Rating		
	Current	Potential
<i>Very energy efficient - lower running costs</i>		
(92+) A		
(81-91) B		
(69-80) C		78
(55-68) D	65	



Ground Floor



Floor 1



Approximate total area⁽¹⁾
730 ft²
67.7 m²

(1) Excluding balconies and terraces

Calculations reference the RICS IPMS 3C standard. Measurements are approximate and not to scale. This floor plan is intended for illustration only.

GIRAFFE360

Martin & Co Stoke on Trent

12 Albion Street • Stoke-On-Trent • ST1 1QH

T: 01782 262880 • E: stokeontrent@martinco.com <http://www.martinco.com>

01782 262880



Accuracy: References to the Tenure of a Property are based on information supplied by the Seller. The Agent has not had sight of the title documents. A Buyer is advised to obtain verification from their Solicitor. Items shown in photographs including but not limited to carpets, fixtures and fittings are not included unless specifically mentioned within the sales particulars. They may however be available by separate negotiation. Buyers must check the availability of any property and make an appointment to view before embarking on any journey to see a property. No person in the employment of the agent has any authority to make any representation about the property, and accordingly any information given is entirely without responsibility on the part of the agents, sellers(s) or lessors(s). Any property particulars are not an offer or contract, nor for part of one. **Sonic / laser Tape:** Measurements taken using a sonic / laser tape measure may be subject to a small margin of error. **All Measurements:** All Measurements are Approximate. **Services Not tested:** The Agent has not tested any apparatus, equipment, fixtures and fittings or services and so cannot verify that they are in working order or fit for the purpose. A Buyer is advised to obtain verification from their Solicitor or Surveyor.