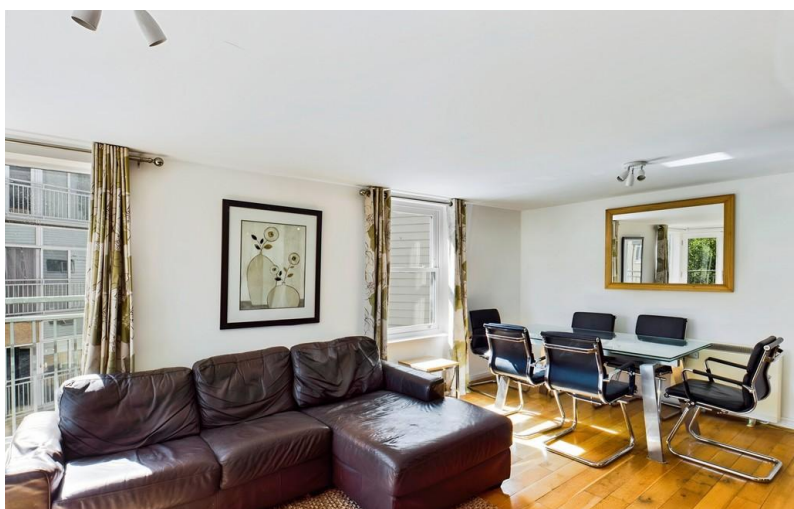


ON HOLD



Bingley Court, Canterbury

3 Bedrooms, 2 Bathroom, Flat

£1,500 pcm



Bingley Court, Canterbury

Flat,
3 bedroom, 2 bathroom

£1,500 pcm

Date available:

Deposit: £1,730

Furnished

Council Tax band: D

- Close to city centre
- Perfect for both UKC and CCCU
- Next to supermarkets
- Bills package available
- Available now
- 2 bathrooms
- 3 large bedrooms

** Students 2025- 2026**

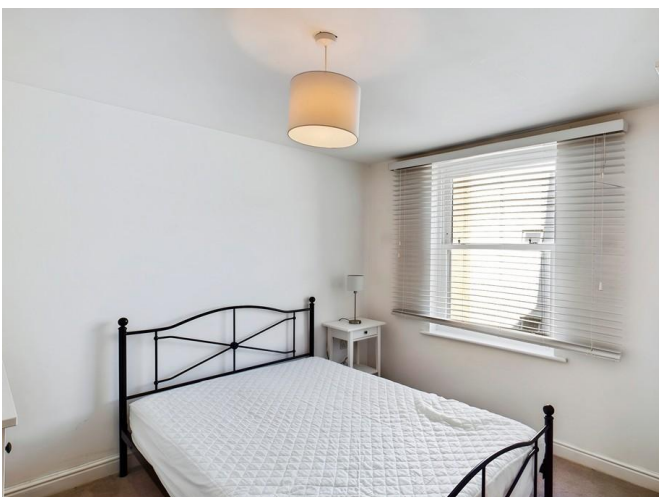
Martin and Co are delighted to offer this beautiful three-bedroom, 2 bathroom property to the market.

This apartment has the benefit of modern wooden style flooring throughout and white walls giving a lovely modern feel to the property with good quality furniture provided.

There are three great sized bedrooms, one has the perk of an en-suite.

Located 5 minutes from the town centre and also has one of the major supermarkets on its door step!

Score	Energy rating	Current	Potential
92+	A		
81-91	B	82 B	83 B
69-80	C		
55-68	D		
39-54	E		
21-38	F		
1-20	G		





Martin & Co Canterbury

71 Castle Street • Canterbury • CT1 2QD

T: 01227 455717 • E: canterbury@martinco.com

01227 455717

<http://www.martinco.com>



Accuracy: References to the Tenure of a Property are based on information supplied by the Seller. The Agent has not had sight of the title documents. A Buyer is advised to obtain verification from their Solicitor. Items shown in photographs including but not limited to carpets, fixtures and fittings are not included unless specifically mentioned within the sales particulars. They may however be available by separate negotiation. Buyers must check the availability of any property and make an appointment to view before embarking on any journey to see a property. No person in the employment of the agent has any authority to make any representation about the property, and accordingly any information given is entirely without responsibility on the part of the agents, sellers(s) or lessors(s). Any property particulars are not an offer or contract, nor for mpart of one. **Sonic / laser Tape:** Measurements taken using a sonic / laser tape measure may be subject to a small margin of error. **All Measurements:** All Measurements are Approximate. **Services Not tested:** The Agent has not tested any apparatus, equipment, fixtures and fittings or services and so cannot verify that they are in working order or fit for the purpose. A Buyer is advised to obtain verification from their Solicitor or Surveyor.