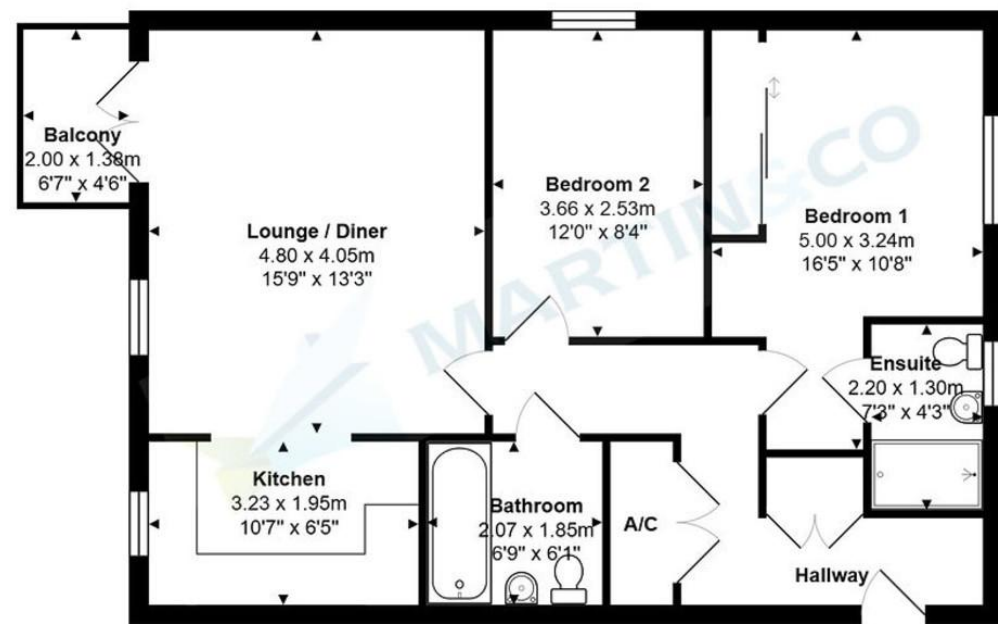


Property Location Poole



Total Area: 68.5 m² ... 737 ft² (excluding balcony)
All measurements are approximate and for display purposes only



Accuracy: References to the Tenure of a Property are based on information supplied by the Seller. The Agent has not had sight of the title documents. A Buyer is advised to obtain verification from their Solicitor. Items shown in photographs including but not limited to carpets, fixtures and fittings are not included unless specifically mentioned within the sales particulars. They may however be available by separate negotiation. Buyers must check the availability of any property and make an appointment to view before embarking on any journey to see a property. No person in the employment of the agent has any authority to make any representation about the property, and accordingly any information given is entirely without responsibility on the part of the agents, sellers(s) or lessors(s). Any property particulars are not an offer or contract, nor form part of one. **Sonic / laser Tape:** Measurements taken using a sonic / laser tape measure may be subject to a small margin of error. **All Measurements:** All Measurements are Approximate. **Services Not tested:** The Agent has not tested any apparatus, equipment, fixtures and fittings or services and so cannot verify that they are in working order or fit for the purpose. A Buyer is advised to obtain verification from their Solicitor or Surveyor.

Avenel Way , Poole

Guide Price £250,000

Martin & Co Poole
• 109 Commercial Road • Poole • BH14 0JD
T: 01202 710171 • E: poole@martinco.com

01202 710171
<http://www.poole.martinco.com>



- 2 Double Bedrooms
- Close To Poole Centre
- No Forward Chain
- Balcony
- Underground Parking
- 2 Bathrooms
- Sea Views
- Ideal First Time Buy
- One Owner Since New
- Modern Kitchen



Why you'll like it

Located just moments from the vibrant Poole Quay, this beautifully presented two-bedroom flat offers modern living.

The main bedroom is a standout feature, complete with fitted wardrobes providing ample storage, and an en-suite bathroom fitted with a shower, toilet, and sink. The second bedroom is also a good-sized double, serviced by a well-appointed family bathroom that includes a bath with a shower over, toilet, and sink perfect for guests or shared living.

The stylish, modern kitchen, features an integrated oven and hob, and space for free-standing appliances. The open-plan lounge/diner, creates a light and airy living area that's ideal for relaxing or entertaining. The dual-aspect design allows natural light to flood the space, enhancing its welcoming feel.

One of the key highlights of this flat is its access to a private balcony, offering stunning sea views.

Situated close to Poole Quay, residents can enjoy a range of local amenities, including cafes, restaurants, shops, and excellent transport links. Whether you're looking for a permanent residence or a stylish coastal retreat, this two-bedroom flat offers a fantastic opportunity to enjoy the best of waterside living in Poole.

Score	Energy rating	Current	Potential
92+	A		
81-91	B		
69-80	C		
55-68	D		
39-54	E		
21-38	F		
1-20	G		
		79 C	85 B

1. Money laundering regulations: intending purchasers will be asked to produce identification documentation at a later stage and we would ask for your cooperation in order that there will be no delay in agreeing the sale.

2. General: while we endeavour to make our sales particulars fair, accurate and reliable, they are only a general guide to the property and, accordingly, if there is any point which is of particular importance to you, please contact the office and we will check the position for you, especially if you are contemplating travelling some distance to view the property.

3. Measurements: these approximate room sizes are only intended as general guidance. You must verify the dimensions carefully before ordering carpets or any built-in furniture.

4. Services: please note we have not tested the services or any of the equipment or appliances in this property, accordingly we strongly advise prospective buyers to commission their own survey or service reports before finalising their offer to purchase.

5. These particulars are issued in good faith but do not constitute representations of fact or form part of any offer or contract. The matters referred to in these particulars should be independently verified by prospective buyers or tenants. Neither Martin and Co Poole limited nor any of its employees or agents has any authority to make or give any representation or warranty whatever in relation to this property.

