

**FOR SALE**



**The Avenue, Branksome Park**  
**£650,000**

  
**MARTIN & CO**



## The Avenue, Branksome Park

4 Bedrooms, 4 Bathroom

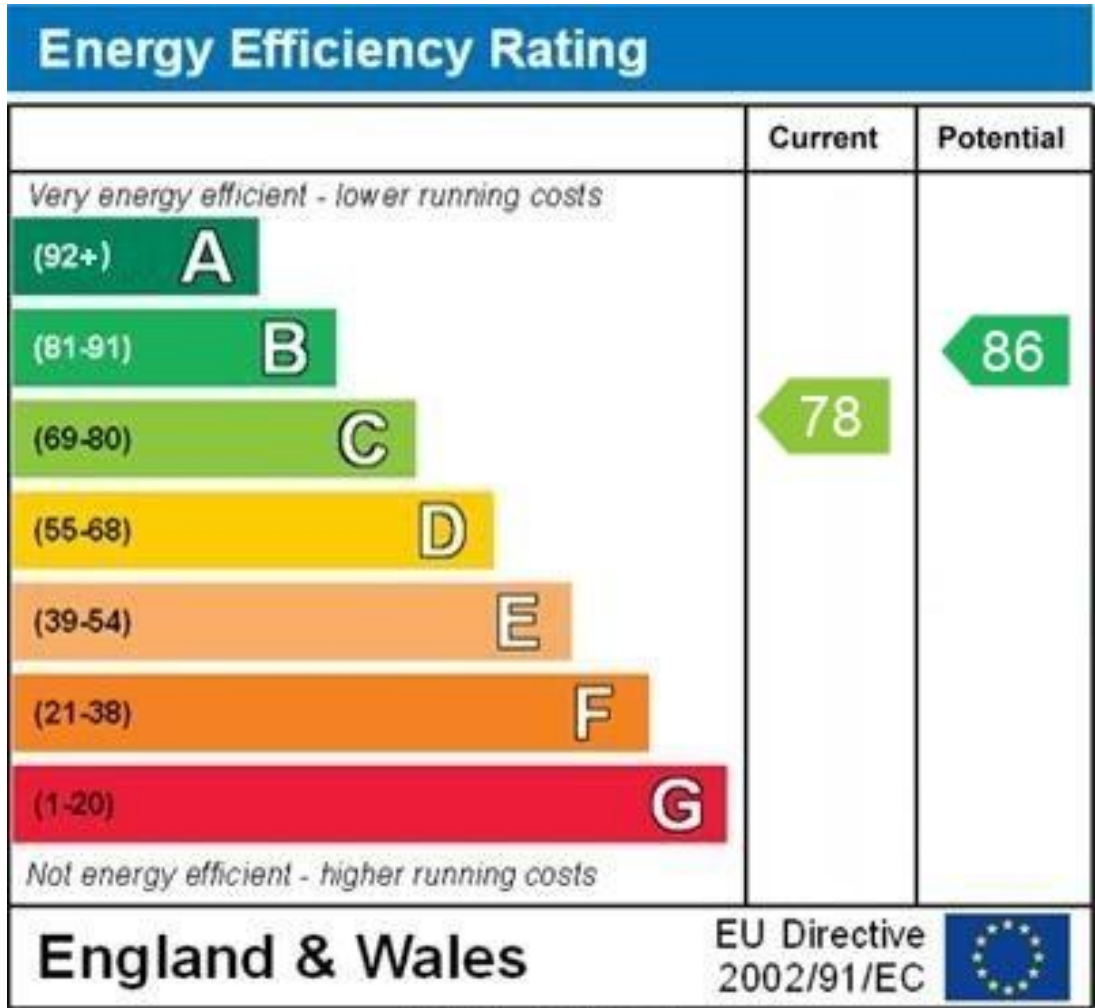
**£650,000**

- IMMACULATE TOWN HOUSE
- PRIVATE MEWS DEVELOPMENT
- BRANKSOME PARK
- FOUR DOUBLE BEDROOMS
- FOUR ENSUITE BATHROOMS
- NEAR BRANKSOME CHINE BEACH
- CARPORT & PARKING SPACE
- CHAIN FREE

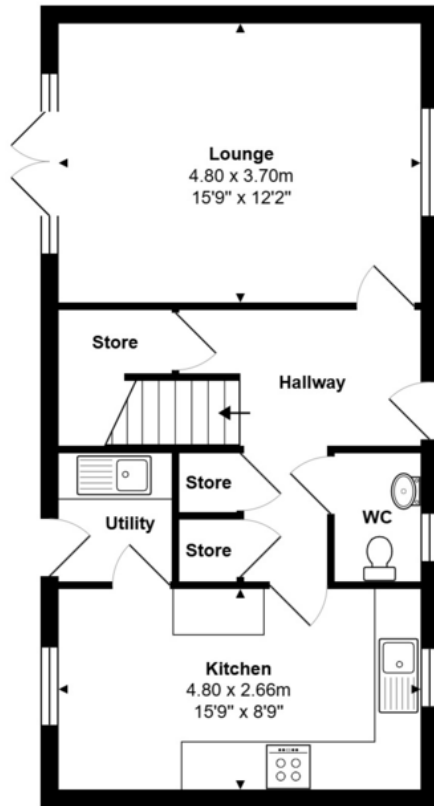


Fantastic opportunity to live in this private mews development in Branksome Park, within a short walk of Westbourne and Branksome Chine Beach, deceptively spacious accommodation over three floors, comprising of four bedrooms, four ensuite bathrooms, two reception rooms, fitted kitchen with some integrated appliances and utility, downstairs cloakroom, private sunny patio garden, carport and allocated parking space. Chain free.

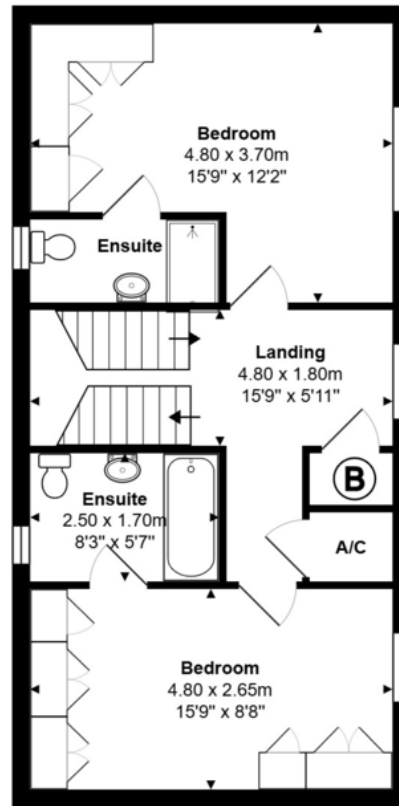




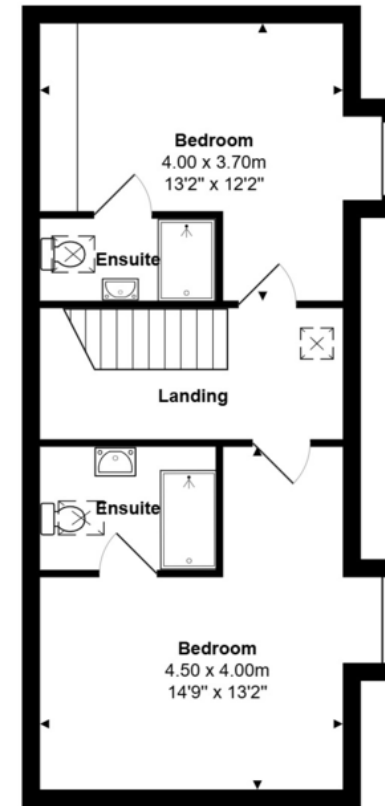




Ground Floor



First Floor



Second Floor

## Martin & Co Poole

109 Commercial Road • • Poole • BH14 0JD  
T: 01202 710171 • E: poole@martinco.com

# 01202 710171

<http://www.poole.martinco.com>



**Accuracy:** References to the Tenure of a Property are based on information supplied by the Seller. The Agent has not had sight of the title documents. A Buyer is advised to obtain verification from their Solicitor. Items shown in photographs including but not limited to carpets, fixtures and fittings are not included unless specifically mentioned within the sales particulars. They may however be available by separate negotiation. Buyers must check the availability of any property and make an appointment to view before embarking on any journey to see a property. No person in the employment of the agent has any authority to make any representation about the property, and accordingly any information given is entirely without responsibility on the part of the agents, sellers(s) or lessors(s). Any property particulars are not an offer or contract, nor form part of one. **Sonic / Laser Tape:** Measurements taken using a sonic / laser tape measure may be subject to a small margin of error. **All Measurements:** All Measurements are Approximate. **Services Not tested:** The Agent has not tested any apparatus, equipment, fixtures and fittings or services and so cannot verify that they are in working order or fit for the purpose. A Buyer is advised to obtain verification from their Solicitor or Surveyor.