



18 Lochmore Close, Hinckley, LE10 0TY
£240,000 Freehold


MARTIN&CO

Lochmore Close, Hinckley

3 Bedrooms, 1 Bathroom

£240,000

- A THREE BEDROOM SEMI DETACHED HOME
- HOLLYCROFT ESTATE
- ELECTRIC HEATING AND DOUBLE GLAZED
- TWO RECEPTION ROOMS
- MODERN KITCHEN
- THREE BEDROOMS AND A DRESSING

AN EXTENDED THREE BEDROOM SEMI DETACHED HOME IN HOLLYCROFT, HINCKLEY. Comprising entrance porch/hallway, lounge, dining room, kitchen. First floor three bedrooms, dressing room and family bathroom. Electric heating and double glazed. Front driveway and garage. Rear garden and patio. NO CHAIN!



Score	Energy rating	Current	Potential
92+	A		
81-91	B		81 B
69-80	C		
55-68	D		
39-54	E	40 E	
21-38	F		
1-20	G		

PORCH AND HALLWAY Entrance porchway leading into the hallway. Stairs to the first floor and entrance to the lounge.

FRONT LOUNGE 10' 9" x 12' 10" (3.3m x 3.92m) Front lounge having a carpeted floor and decorated in a neutral colour. uPVC double glazed window over looking the front of the home.

REAR DINING ROOM 7' 6" x 11' 6" (2.3m x 3.52m) Rear dining area with access to the kitchen and lounge. uPVC double glazed window over looking the rear garden.

KITCHEN 5' 11" x 11' 10" (1.81m x 3.63m) Rear modern kitchen comprising electric ovens and hob, washing machine and dish washer. Access to the rear garden.

LANDING Providing access to all bedrooms and bathroom

FRONT BEDROOM 12' 0" x 8' 5" (3.68m x 2.58m) Double bedroom over looking the front of the home. Decorated in a neutral colour.

DRESSING ROOM 6' 11" x 9' 0" (2.12m x 2.76m) Accessed from the main bedroom and located above the garage. Having dual aspect.

REAR BEDROOM 5' 4" x 9' 1" (1.63m x 2.77m) Single bedroom over looking the rear garden. Having a carpeted floor.

REAR BEDROOM 8' 3" x 9' 3" (2.53m x 2.82m) Rear double bedroom, having a carpeted floor and a double glazed window.

FAMILY BATHROOM 5' 5" x 6' 5" (1.66m x 1.98m) Modern family bathroom with shower cubicle, sink and WC.

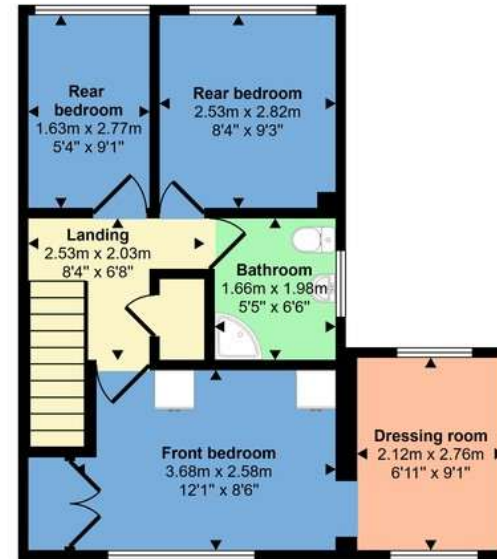
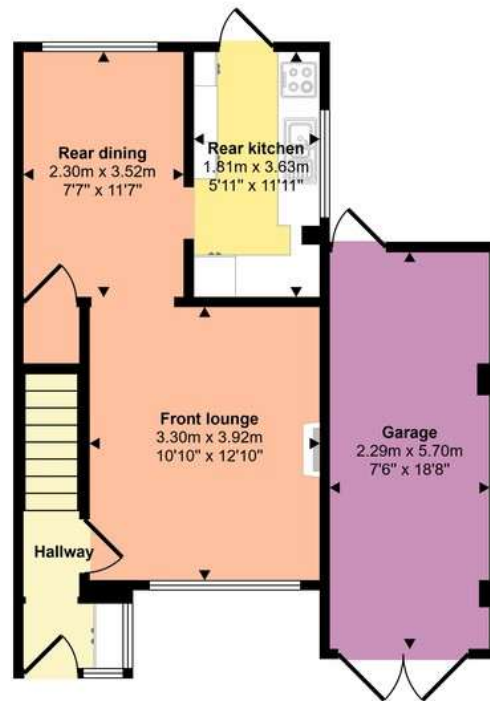
OUTSIDE Front driveway, garden and good sized garage, with rear patio and enclosed garden.







Approx Gross Internal Area
88 sq m / 945 sq ft



This floorplan is only for illustrative purposes and is not to scale. Measurements of rooms, doors, windows, and any items are approximate and no responsibility is taken for any error, omission or mis-statement. Icons of items such as bathroom suites are representations only and may not look like the real items. Made with Made Snappy 360.

Martin & Co Hinckley

99-109 Castle Street • • Hinckley • LE10 1DA
T: 01455 636349 • E: hinckley@martinco.com

01455 636349

<http://www.martinco.com>

MARTIN&CO

Accuracy: References to the Tenure of a Property are based on information supplied by the Seller. The Agent has not had sight of the title documents. A Buyer is advised to obtain verification from their Solicitor. Items shown in photographs including but not limited to carpets, fixtures and fittings are not included unless specifically mentioned within the sales particulars. They may however be available by separate negotiation. Buyers must check the availability of any property and make an appointment to view before embarking on any journey to see a property. No person in the employment of the agent has any authority to make any representation about the property, and accordingly any information given is entirely without responsibility on the part of the agents, sellers(s) or lessors(s). Any property particulars are not an offer or contract, nor form part of one. **Sonic / laser Tape:** Measurements taken using a sonic / laser tape measure may be subject to a small margin of error. **All Measurements:** All Measurements are Approximate. **Services Not tested:** The Agent has not tested any apparatus, equipment, fixtures and fittings or services and so cannot verify that they are in working order or fit for the purpose. A Buyer is advised to obtain verification from their Solicitor or Surveyor.