

FOR SALE



Fulwell Close, Banbury
Offers In Excess Of £180,000


MARTIN&CO

Fulwell Close, Banbury

Offers In Excess Of £180,000

- Good-sized two bedroom house
- Brilliant investment opportunity
- Close to Banbury train station
- Walking distance to town centre
- Allocated parking space and garage

Martin & Co are delighted to market this 2 bedroom end-terraced property on Fulwell Close, Banbury. The house is approximately 0.22 Miles away from the Banbury train station and walking distance to town

KITCHEN 9' 9" x 6' 1" (2.97m x 1.85m)

LOUNGE 15' 11" x 13' 1" (4.85m x 3.99m)

BEDROOM 1 13' x 9' 6" (3.96m x 2.9m)

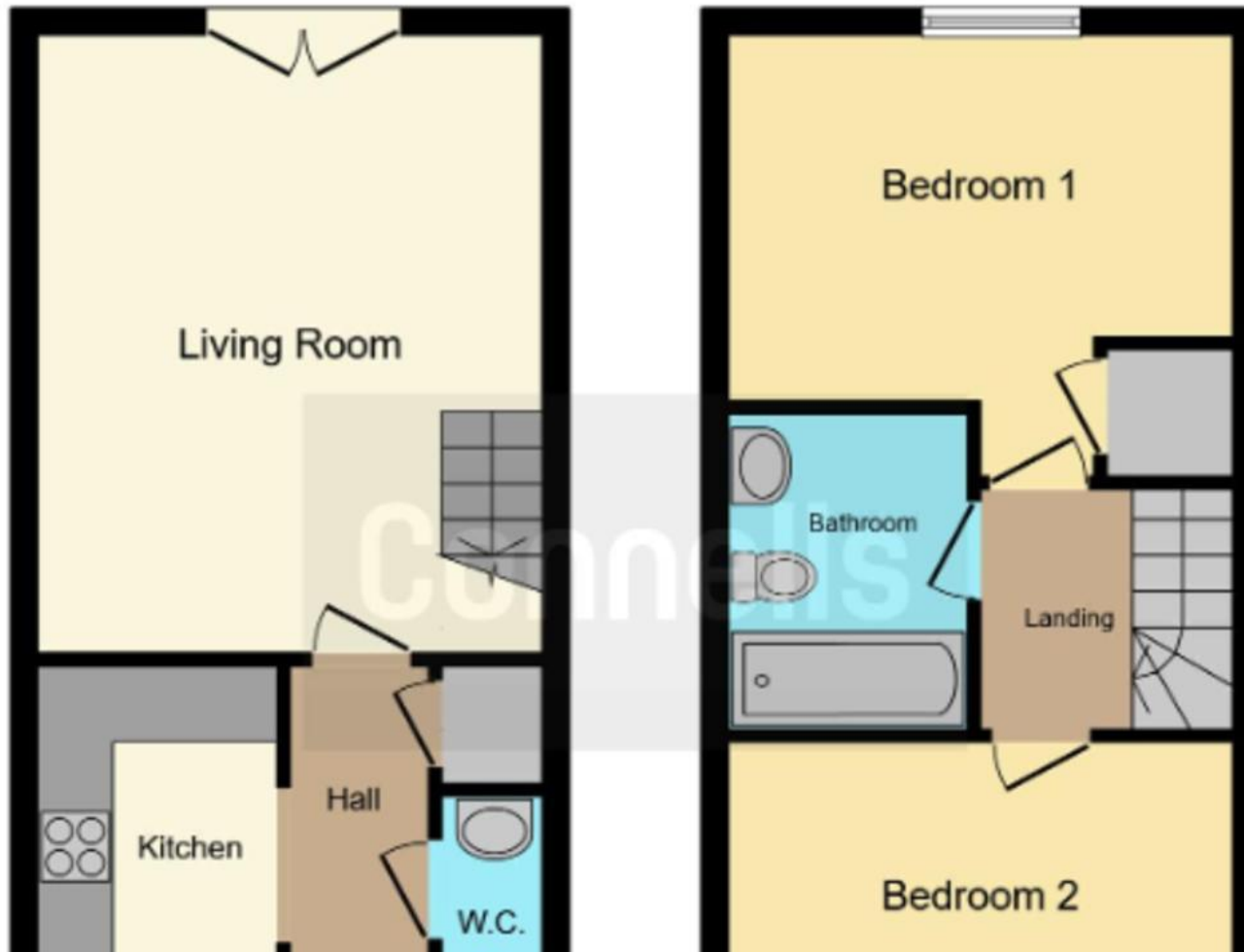
BEDROOM 2 13' x 7' 11" (3.96m x 2.41m)





%epcGraph_c_1_322%





Martin & Co Banbury

7 North Bar Street • Banbury • OX16 0TB
T: 01295 701773 • E: banbury@martinco.com

01295 701773

<http://www.martinco.com>


MARTIN&CO

Accuracy: References to the Tenure of a Property are based on information supplied by the Seller. The Agent has not had sight of the title documents. A Buyer is advised to obtain verification from their Solicitor. Items shown in photographs including but not limited to carpets, fixtures and fittings are not included unless specifically mentioned within the sales particulars. They may however be available by separate negotiation. Buyers must check the availability of any property and make an appointment to view before embarking on any journey to see a property. No person in the employment of the agent has any authority to make any representation about the property, and accordingly any information given is entirely without responsibility on the part of the agents, sellers(s) or lessors(s). Any property particulars are not an offer or contract, nor form part of one. **Sonic / Laser Tape:** Measurements taken using a sonic / laser tape measure may be subject to a small margin of error. **All Measurements:** All Measurements are Approximate. **Services Not tested:** The Agent has not tested any apparatus, equipment, fixtures and fittings or services and so cannot verify that they are in working order or fit for the purpose. A Buyer is advised to obtain verification from their Solicitor or Surveyor.