

ON HOLD



Newbury Gardens , Upminster

2 Bedrooms, 1 Bathroom, Semi-Detached Bungalow

£500,000



Newbury Gardens , Upminster

2 Bedrooms, 1 Bathroom

£500,000

A splendid, semi detached bungalow in a sought after and quiet location. This property benefits from two double bedrooms, an L shaped through lounge, a fitted kitchen and a family bathroom. The property also benefits from a sun lounge/conservatory and there is a garage to the rear of a beautiful, secluded and mature garden. The property has a private side gate to the rear and is being sold with no associated chain.

Freehold

London Borough of Havering Council Tax Band D

- TWO DOUBLE BEDROOMS
- L SHAPED THROUGH LOUNGE
- FITTED KITCHEN
- SUN LOUNGE
- FAMILY BATHROOM

PORCH With access to the main property

HALLWAY With access to various rooms. Built in storage cupboard.

L SHAPED LOUNGE Large L Shaped lounge with patio doors to rear garden, access to kitchen and picture window to flank.

KITCHEN One and a half bowl stainless steel single bowl single drainer sink unit with mixer taps and cupboards under. Further range of matching base and eye level units with rolled top work surfaces over. Electric hob and oven with exhaust fan over (untested items). Plumbing for washing machine. Picture window to flank. Access to sun lounge/conservatory.

BEDROOM ONE 14' 9" x 11' 0" (4.499m x 3.354m)
Measured approximately and into bay.

BEDROOM TWO 8' 5" x 8' 8" (2.585m x 2.648m)
Measured at widest points and approximately. Oriol Bay window.

FAMILY BATHROOM White suite comprises WC with low level flush unit, panelled bath, pedestal wash hand basin, white tiled walls. Shower attachment. Picture



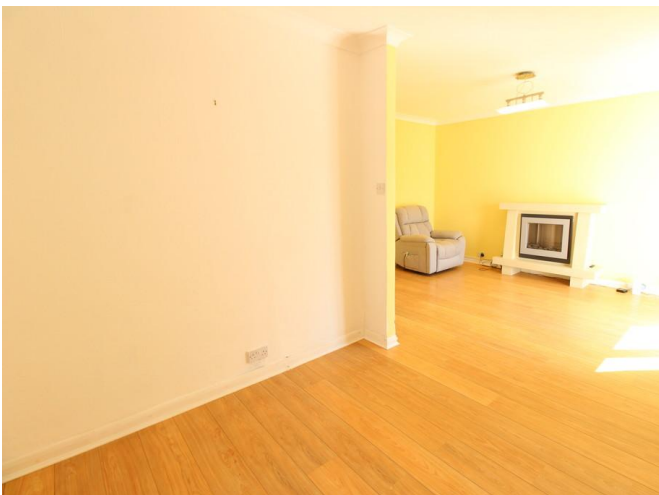


window to flank.

CONSERVATORY Sun trap with access to garden.

MATURE GARDEN A picturesque and secluded garden with apple trees, mature shrubs and a lawn. Private side access to the front and access to a spacious garage.

GARAGE Spacious and accessed via a rear service road.





%epcGraph_c_1_210%





Martin & Co Romford

215a North Street • • Romford • RM1 4QA
T: • E:

<http://www.martinco.com>



Accuracy: References to the Tenure of a Property are based on information supplied by the Seller. The Agent has not had sight of the title documents. A Buyer is advised to obtain verification from their Solicitor. Items shown in photographs including but not limited to carpets, fixtures and fittings are not included unless specifically mentioned within the sales particulars. They may however be available by separate negotiation. Buyers must check the availability of any property and make an appointment to view before embarking on any journey to see a property. No person in the employment of the agent has any authority to make any representation about the property, and accordingly any information given is entirely without responsibility on the part of the agents, sellers(s) or lessors(s). Any property particulars are not an offer or contract, nor for m part of one. **Sonic / laser Tape:** Measurements taken using a sonic / laser tape measure may be subject to a small margin of error. **All Measurements:** All Measurements are Approximate. **Services Not tested:** The Agent has not tested any apparatus, equipment, fixtures and fittings or services and so cannot verify that they are in working order or fit for the purpose. A Buyer is advised to obtain verification from their Solicitor or Surveyor.