

ON HOLD



Shetland Gardens, Intake
£800 pcm


MARTIN & CO



Shetland Gardens, Intake

Mid Terraced House,
3 bedroom, 1 bathroom

£800 pcm

Date available: 27th January 2025

Deposit: £923.07

Unfurnished

Council Tax band:

- Three Bedrooms.
- Mid-Terraced.
- Rear Yard.
- Outhouse.
- Popular Location.
- Excellent Transport Links.
- Close to Local Amenities.



Martin&Co are pleased to present to the market a well presented three bedroom mid-terraced family home situated in the popular location of Intake. Briefly comprising of a living room, kitchen and outhouse on the ground floor. Two double bedrooms, a single bedroom, WC and family bathroom on the first floor. Also benefits from a rear yard and on street parking. Close to local amenities and excellent transport links. Call now to arrange a viewing!

LIVING ROOM 17' 10" x 10' 5" (5.44m x 3.18m) A light and bright front facing living room.

KITCHEN 12' 7" x 7' 8" (3.84m x 2.34m) A galley kitchen fitted with a range of white wall and base units complimented with wood effect worktops. Also

benefits from a freestanding oven, hob and washing machine. There is also space for an under counter fridge/freezer.

BEDROOM 10' 11" x 11' 6" (3.33m x 3.51m) A double bedroom with fitted wardrobes situated on the first floor.

BEDROOM 11' 8" x 9' 2" (3.56m x 2.79m) A second double bedroom situated on the first floor.

BEDROOM 7' 2" x 9' 2" (2.18m x 2.79m) A single bed with mattress situated on the first floor.

WC 5' 6" x 2' 8" (1.68m x 0.81m) A separate WC situated on the first floor.

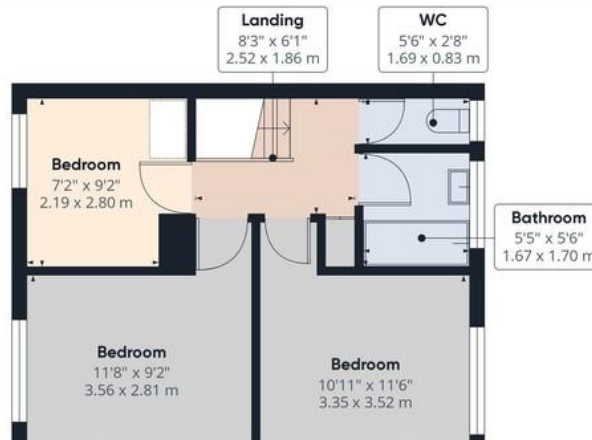
BATHROOM 5' 5" x 5' 6" (1.65m x 1.68m) A family bathroom fitted with a white two piece suite and over bath electric shower.



%epcGraph_c_1_544%



Ground Floor



Approximate total area⁽¹⁾
825.16 ft²
76.66 m²

(1) Excluding balconies and terraces

While every attempt has been made to ensure accuracy, all measurements are approximate, not to scale. This floor plan is for illustrative purposes only.

Martin & Co Doncaster

38 Hall Gate • Doncaster • DN1 3NR
T: 01302 343 494 • E: doncaster@martinco.com

01302 343 494

<http://www.martinco.com>



Accuracy: References to the Tenure of a Property are based on information supplied by the Seller. The Agent has not had sight of the title documents. A Buyer is advised to obtain verification from their Solicitor. Items shown in photographs including but not limited to carpets, fixtures and fittings are not included unless specifically mentioned within the sales particulars. They may however be available by separate negotiation. Buyers must check the availability of any property and make an appointment to view before embarking on any journey to see a property. No person in the employment of the agent has any authority to make any representation about the property, and accordingly any information given is entirely without responsibility on the part of the agents, sellers(s) or lessors(s). Any property particulars are not an offer or contract, nor form part of one. **Sonic / Laser Tape:** Measurements taken using a sonic / laser tape measure may be subject to a small margin of error. **All Measurements:** All Measurements are Approximate. **Services Not tested:** The Agent has not tested any apparatus, equipment, fixtures and fittings or services and so cannot verify that they are in working order or fit for the purpose. A Buyer is advised to obtain verification from their Solicitor or Surveyor.