

ON HOLD



Lifford Road, Wheatley
£875 pcm


MARTIN & CO



Lifford Road, Wheatley

Mid Terraced House,
3 bedroom, 1 bathroom

£875 pcm

Date available: 17th February 2025

Deposit: £1,009.61

Unfurnished

Council Tax band:

- Three Double Bedrooms.
- Mid-Terraced.
- Dining Room.
- Family Bathroom.
- Rear Yard.
- Popular Location.
- Available Now.



A three bedroom mid-terraced family home available in the heart of Wheatley. Briefly comprising of a kitchen and an open plan living room/dining room on the ground floor. Two double bedrooms, a single bedroom and a family bathroom on the first floor. Also benefits from on road parking and a large rear yard. Close to local amenities and excellent transport links. Call now to arrange a viewing!

KITCHEN 18' 1" x 8' 10" (5.51m x 2.69m) Fitted with a range of white wall and base units complemented with wood effect worktops. Also benefits from an integrated gas hob, oven, extractor fan and washing machine.

LIVING ROOM/DINING ROOM 25' 0" x 11' 0" (7.62m

x 3.35m) A light and bright open plan living room/diner complemented with a feature fireplace. There is plenty of space for a dining table.

BEDROOM 10' 6" x 14' 2" (3.2m x 4.32m) A double bedroom situated on the first floor.

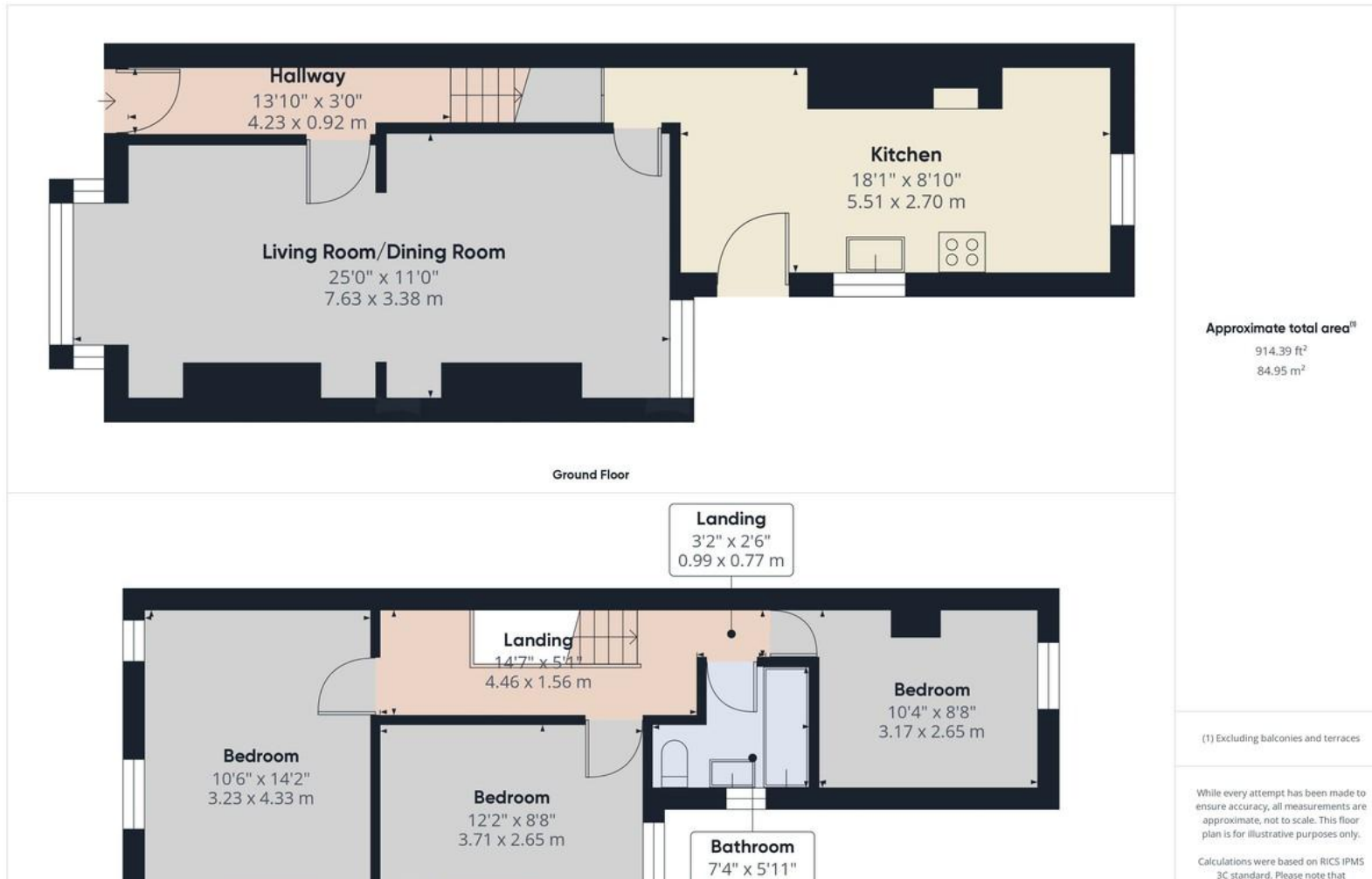
BEDROOM 12' 2" x 8' 8" (3.71m x 2.64m) A second double bedroom situated on the first floor.

BEDROOM 10' 4" x 8' 8" (3.15m x 2.64m) A third double bedroom situated on the first floor.

BATHROOM 7' 4" x 5' 11" (2.24m x 1.8m) A family bathroom fitted with a white three piece suite.



%epcGraph_c_1_544%



Martin & Co Doncaster

38 Hall Gate • Doncaster • DN1 3NR
 T: 01302 343 494 • E: doncaster@martinco.com

01302 343 494

<http://www.martinco.com>



Accuracy: References to the Tenure of a Property are based on information supplied by the Seller. The Agent has not had sight of the title documents. A Buyer is advised to obtain verification from their Solicitor. Items shown in photographs including but not limited to carpets, fixtures and fittings are not included unless specifically mentioned within the sales particulars. They may however be available by separate negotiation. Buyers must check the availability of any property and make an appointment to view before embarking on any journey to see a property. No person in the employment of the agent has any authority to make any representation about the property, and accordingly any information given is entirely without responsibility on the part of the agents, sellers(s) or lessors(s). Any property particulars are not an offer or contract, nor form part of one. **Sonic / Laser Tape:** Measurements taken using a sonic / laser tape measure may be subject to a small margin of error. **All Measurements:** All Measurements are Approximate. **Services Not tested:** The Agent has not tested any apparatus, equipment, fixtures and fittings or services and so cannot verify that they are in working order or fit for the purpose. A Buyer is advised to obtain verification from their Solicitor or Surveyor.