

TO LET



Acacia Road, Cantley
£825 pcm


MARTIN & CO



Acacia Road, Cantley

Semi Detached House,
3 bedroom, 1 bathroom

£825 pcm

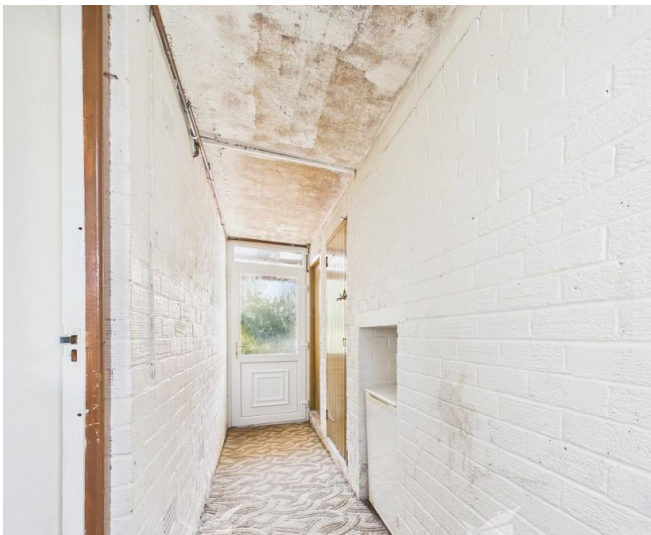
Date available: 5th May 2026

Deposit: £951.92

Unfurnished

Council Tax band: A

- 3 Well Proportioned Bedrooms
- Semi Detached House
- Sought After Location
- Fitted Kitchen
- Open Plan Lounge/Diner
- Attractive Bathroom With White Suite
- Well Maintained Gardens



A well presented 3 bedroom semi detached house situated in this sought after location.

The accommodation comprises entrance hall, spacious double aspect lounge/diner with feature fireplace, modern fitted kitchen with cream shaker style units to the ground floor. Three well proportioned bedrooms and attractive bathroom with a white suite and shower over.

To the exterior well maintained gardens to the front and enclosed garden to the rear laid mainly to lawn.





%epcGraph_c_1_544%





Martin & Co Doncaster

38 Hall Gate • Doncaster • DN1 3NR
T: 01302 343 494 • E: doncaster@martinco.com

01302 343 494

<http://www.martinco.com>



Accuracy: References to the Tenure of a Property are based on information supplied by the Seller. The Agent has not had sight of the title documents. A Buyer is advised to obtain verification from their Solicitor. Items shown in photographs including but not limited to carpets, fixtures and fittings are not included unless specifically mentioned within the sales particulars. They may however be available by separate negotiation. Buyers must check the availability of any property and make an appointment to view before embarking on any journey to see a property. No person in the employment of the agent has any authority to make any representation about the property, and accordingly any information given is entirely without responsibility on the part of the agents, sellers(s) or lessors(s). Any property particulars are not an offer or contract, nor form part of one. **Sonic / Laser Tape:** Measurements taken using a sonic / laser tape measure may be subject to a small margin of error. **All Measurements:** All Measurements are Approximate. **Services Not tested:** The Agent has not tested any apparatus, equipment, fixtures and fittings or services and so cannot verify that they are in working order or fit for the purpose. A Buyer is advised to obtain verification from their Solicitor or Surveyor.