



JULIE PHILPOT  
RESIDENTIAL



## Plot 5 | Southcrest Rise | Kenilworth | CV8 2UF

£480,000

A superb opportunity to purchase this BRAND NEW MILLER HOME. Miller Homes are also offering a great incentive for the buyer which is either a 5% discount off the purchase price or 5% towards the deposit paid by the buyer. This is the final plot on this very nice and small development within easy reach of Kenilworth School, local shops and sporting amenities. Viewing is Essential

- BRAND NEW MILLER HOME
- THREE BEDROOMS
- BATHROOM AND EN-SUITE
- GARAGE & DRIVEWAY

# Tenure

Freehold

# Council Tax Band

F

# Viewing Arrangements

Strictly by appointment

# Contact Details

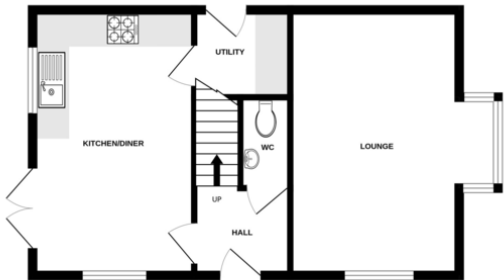
**T:** 01926 257540

**E:** sales@juliephilpot.co.uk

**W:** www.juliephilpot.co.uk

Agents Note: Whilst every care has been taken to prepare these particulars, they are for guidance purposes only. All measurements are approximate and for general guidance purposes only and whilst every care has been taken to ensure their accuracy, they should not be relied upon and potential buyers/tenants are advised to recheck the measurements

GROUND FLOOR



1ST FLOOR



Made with Metropix ©2024

## Energy rating and score

This property's energy rating is B. It has the potential to be A.

[See how to improve this property's energy efficiency.](#)

