

Shaws
KENSINGTON



**Spencer Mansions, Queen's Club Gardens,
London, W14**

Asking Price: £790,000

Share of Freehold

Spencer Mansions, Queen's Club Gardens, London, W14

£2,800 QCG service charge

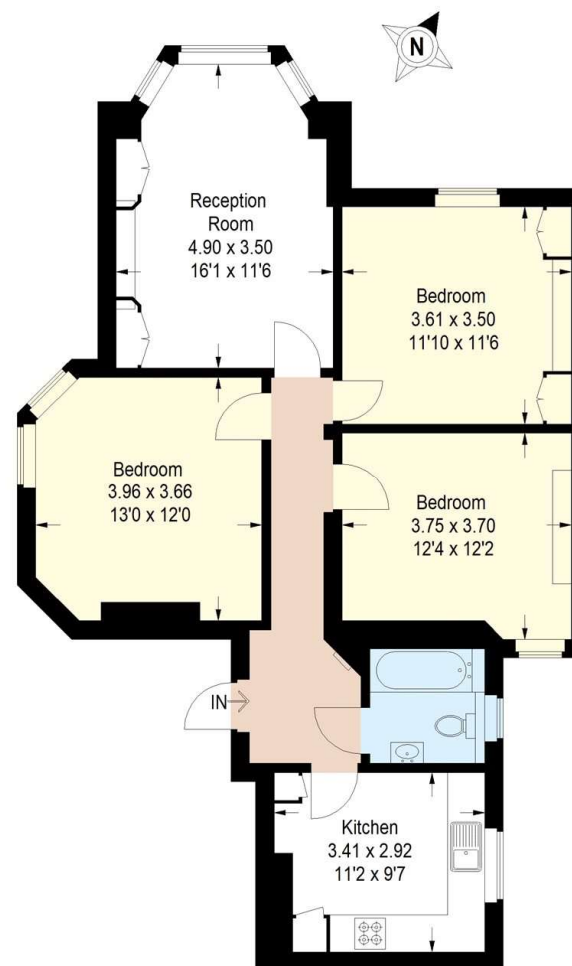
Situated in the beautiful Queens Club Gardens, this spacious lower ground floor apartment comprises three bedrooms and generous living space. The property is decorated to a high standard, benefitting from a bay fronted living room, eat-in kitchen and contemporary bathroom.

As well as beautiful surroundings, Queens Club residents enjoy access to private gardens, tennis courts and estate office services. The area is popular on account of its prime location, within half a mile of both Barons Court and West Kensington underground stations. Local shops and facilities in Fulham Broadway are just a short walk away.

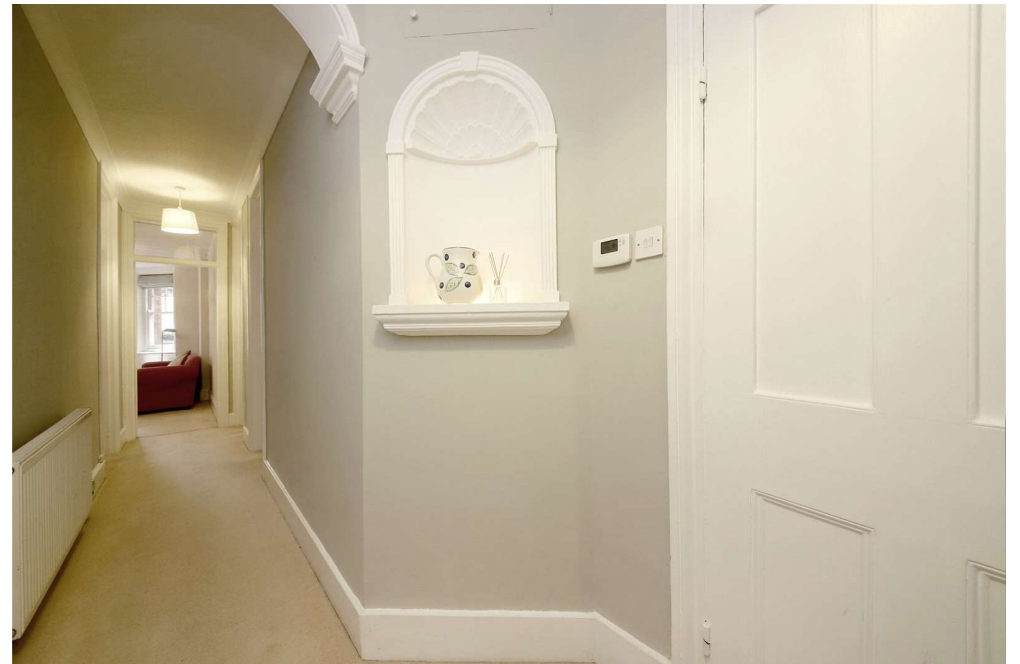
- Share of Freehold
- Generous living space
- Tasteful decor throughout
- Eat-in kitchen
- Highly sought after
- location
- Beautiful communal gardens

Spencer Mansions, W14

Approximate Gross Internal Area
80.4 sq m / 865 sq ft



This plan is for layout guidance only. Not drawn to scale unless stated. Windows and door openings are approximate. Whilst every care is taken in the preparation of this plan, please check all dimensions, shapes and compass bearings before making any decisions reliant upon them. (ID476717)





Energy Efficiency Rating

	Current	Potential
Very energy efficient - lower running costs		
(92+) A		
(81-91) B		
(69-80) C	78	82
(55-68) D		
(39-54) E		
(21-38) F		
(1-20) G		
Not energy efficient - higher running costs		
England, Scotland & Wales	EU Directive 2002/91/EC	

Shaws Kensington - Shaws Kensington

Palliser Road
49 Kensington
London
United Kingdom
W14 9EB

T: 02073869996
E: sales@shawskensington.co.uk
<http://www.shawskensington.co.uk>



Jet Software Ltd. Registered in England and Wales - 09408958
Registered Office: Third Floor 67-74 Saffron Hill, London, EC1N 8QX

Disclaimer

Every care has been taken with the preparation of these property details, but complete accuracy cannot be guaranteed. If there is any point, which is of particular importance to you, please obtain professional confirmation. Alternatively, we will be pleased to check the information for you. These Particulars do not constitute a contract or part of a contract. All measurements quoted are approximate. Photographs are reproduced for general information and it cannot be inferred that any item shown is included in the sale. The Fixtures, Fittings & Appliances have not been tested and therefore no guarantee can be given that they are in working order.