

Shaws
KENSINGTON



Lily Close, West Kensington, London, W14

Guide Price: £435,000

Leasehold

Lily Close, West Kensington, London, W14

Leasehold: 94 years remaining

Council Tax Band: D

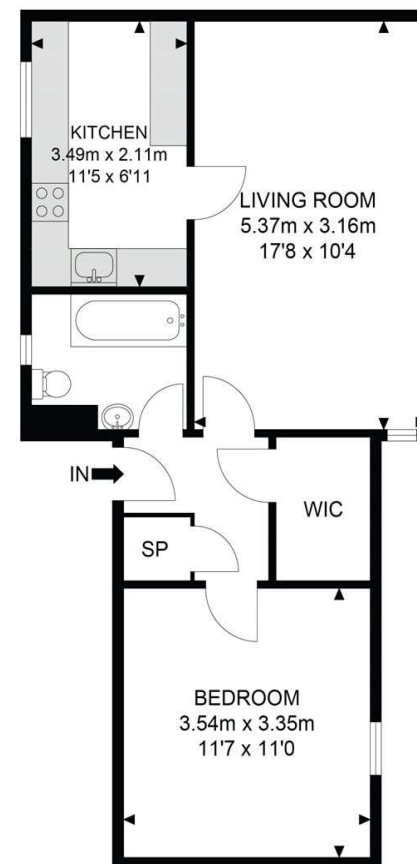
Service Charge (per annum): £2,141.00

This spacious one double bedroom flat is situated within a well-known community that is St Pauls Court, and offers plenty of light and an airy living space. The property located on the third floor and benefits from a newly fitted bathroom and great sized reception room.

Lily Close is an ideal residence for anyone looking for privacy and its ideal transportation links due to it being less than a 5 minutes' walk from Barons Court and lose to Hammersmith Tube stations. Parking space is not included, but is usually available to rent.

- Leasehold
- Bright & Airy Feel
- Communal Gardens
- Lift Access
- Large Reception Room
- Renovated Bathroom
- Large Storage Cupboard
- Ideally Located

Lily Close



3rd Floor



APPROX. GROSS INTERNAL FLOOR AREA 511.28 SQ FT / 47.50 SQM

Whilst every attempt has been made to ensure the accuracy of the floor plan contained here, measurements of doors, windows, rooms and any other items are approximated and no responsibility is taken for any error, omission or mis-statement. This plan is for illustrative purposes only and should be used as such by any prospective purchaser. The service, system and appliances shown have not been tested and no guarantee as to their operability or efficiency can be given.

© SpacePhoto

Photography and Floor Plan





Energy Efficiency Rating		
	Current	Potential
Very energy efficient - lower running costs		
(92+)		
A		
(81-91)		
B		
(69-80)	76	76
C		
(55-68)		
D		
(39-54)		
E		
(21-38)		
F		
(1-20)		
G		
Not energy efficient - higher running costs		
England, Scotland & Wales	EU Directive 2002/91/EC	

Shaws Kensington - Shaws Kensington

Palliser Road
49 Kensington
London
United Kingdom
W14 9EB

T: 02073869996
E: sales@shawskensington.co.uk
<http://www.shawskensington.co.uk>



Jet Software Ltd. Registered in England and Wales - 09408958
Registered Office: Third Floor 67-74 Saffron Hill, London, EC1N 8QX

Disclaimer

Every care has been taken with the preparation of these property details, but complete accuracy cannot be guaranteed. If there is any point, which is of particular importance to you, please obtain professional confirmation. Alternatively, we will be pleased to check the information for you. These Particulars do not constitute a contract or part of a contract. All measurements quoted are approximate. Photographs are reproduced for general information and it cannot be inferred that any item shown is included in the sale. The Fixtures, Fittings & Appliances have not been tested and therefore no guarantee can be given that they are in working order.