



**West Kensington Court, Edith Villas, London,
W14**

Guide Price: £525,000

Share of Freehold

West Kensington Court, Edith Villas, London, W14

Share of Freehold: 975 years remaining
Council Tax Band: D
Service Charge (per annum): £3,736.66
Ground Rent: £0.00

A spacious two-bedroom purpose-built apartment in the stunning development of Edith Villas. With lovely, carpeted floors, fitted kitchen, bathroom and lounge, the apartment further benefits from CCTV, Entry phone, 24 Hour Porter, and is generously proportioned with lovely views over the internal courtyard garden.

Ideally located for West Kensington and Earls Court tube stations providing access into the West-end. Within easy reach of Queens Club, Kensington Olympia and the River Thames this really is an ideal first time buy or investment property. Long Lease services charges include Hot water and heating.

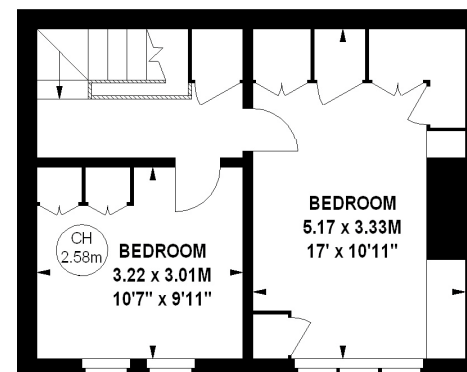
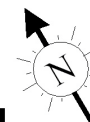
- Share of Freehold
- 24 Hour Porter
- CCTV
- Ground & First Floor Split Level
- Views over the Internal Courtyard
- Convenient Location to Amenities

West Kensington Court, W14

Approximate gross internal area

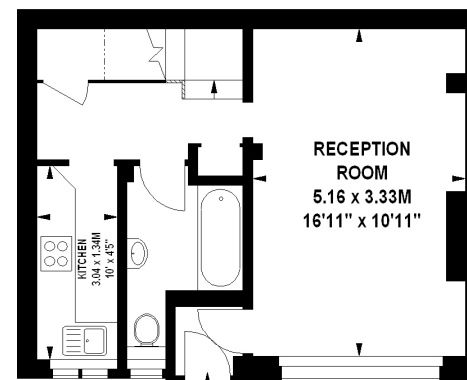
69.12 sq m / 744 sq ft

Key :
CH - Ceiling Height



372 sq ft

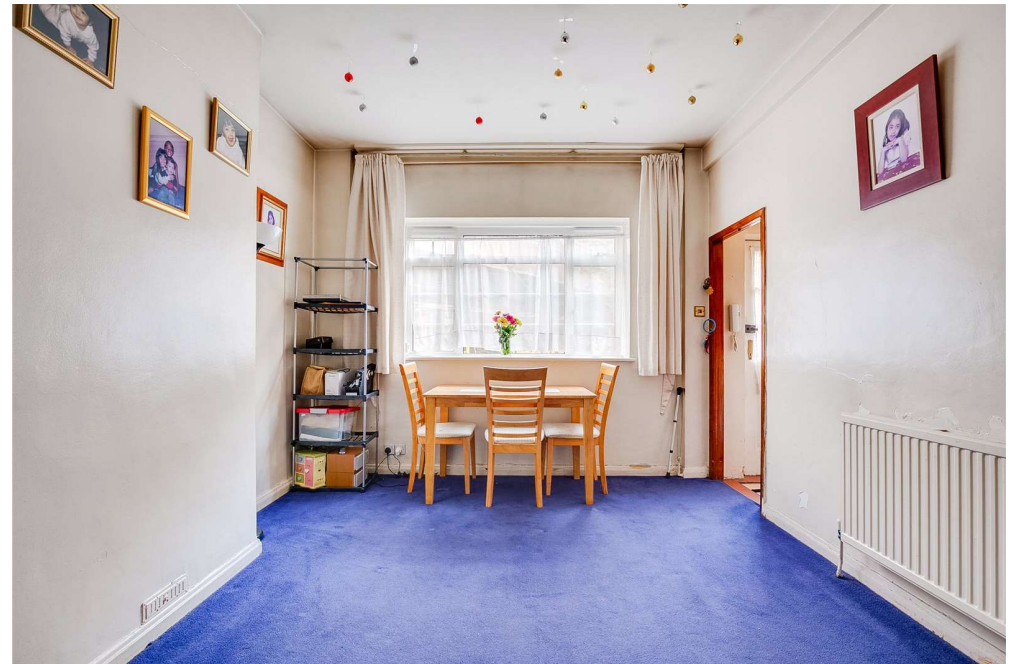
First Floor



372 sq ft

Ground Floor

The floor plan is not to scale and measurements and areas shown are approximate and therefore should be used for illustrative purposes only. The plan has been prepared in accordance with the RICS code of Measuring Practice and whilst we have confidence in the information produced, it must not be relied on. If there is any aspect of particular importance, you should carry out or commission your own inspection of the property.
Copyright of FeaturePRO.





Energy Efficiency Rating		Current	Potential
Very energy efficient - lower running costs			
(92+)	A		
(81-91)	B		
(69-80)	C		
(55-68)	D	58	72
(39-54)	E		
(21-38)	F		
(1-20)	G		
Not energy efficient - higher running costs			
England, Scotland & Wales		EU Directive 2002/91/EC	

Shaws Kensington - Shaws Kensington

Palliser Road
49 Kensington
London
United Kingdom
W14 9EB

T: 02073869996
E: sales@shawskensington.co.uk
<http://www.shawskensington.co.uk>



Jet Software Ltd. Registered in England and Wales - 09408958
Registered Office: Third Floor 67-74 Saffron Hill, London, EC1N 8QX

Disclaimer

Every care has been taken with the preparation of these property details, but complete accuracy cannot be guaranteed. If there is any point, which is of particular importance to you, please obtain professional confirmation. Alternatively, we will be pleased to check the information for you. These Particulars do not constitute a contract or part of a contract. All measurements quoted are approximate. Photographs are reproduced for general information and it cannot be inferred that any item shown is included in the sale. The Fixtures, Fittings & Appliances have not been tested and therefore no guarantee can be given that they are in working order.