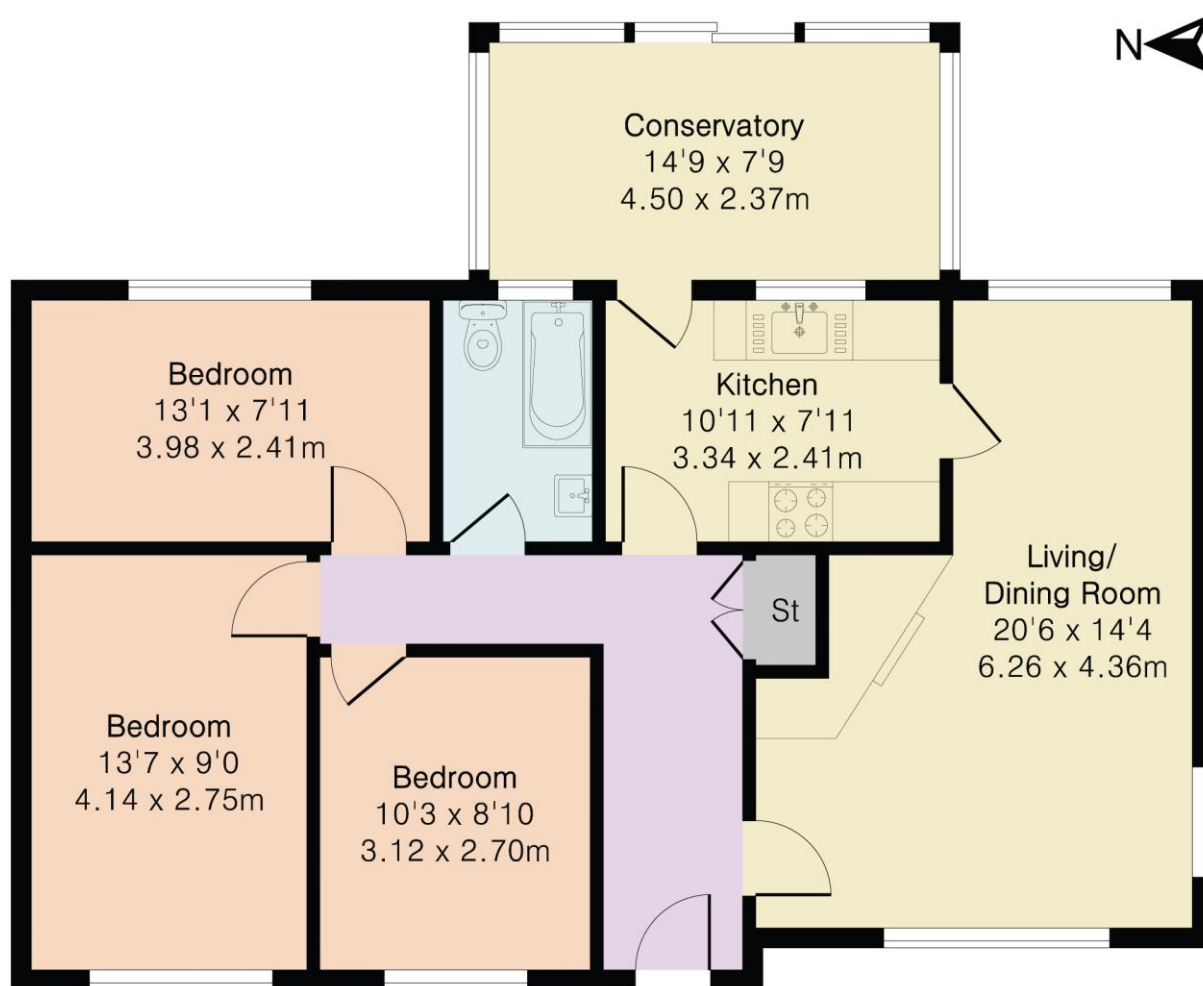


## Approximate Gross Internal Area 938 sq ft - 87 sq m



Heatherfield is a well-proportioned detached bungalow quietly positioned within Buriton, one of Hampshire's most picturesque and unspoilt villages, sitting at the foot of the South Downs National Park. Offered to the market with the benefit of no onward chain, the property presents a compelling opportunity for those seeking to create a bespoke home in an enviable rural setting.

Whilst the property would benefit from a programme of modernisation and updating throughout, the bones of the house are genuinely impressive. Extending to approximately 938 sq ft of internal accommodation, the layout is practical and versatile, comprising three bedrooms, a bathroom, a kitchen, a generous living/dining room measuring over 20 feet in length, and a conservatory to the rear.

To the rear, a particularly attractive south-facing garden forms one of the property's finest attributes - a well-established, mainly lawned plot with a patio terrace adjacent to the conservatory, benefiting from a pleasant open aspect and woodland backdrop. To the front, a tidy lawned garden with established planting provides good kerb appeal, along with a driveway and detached garage.

Properties of this nature - offering genuine potential in an SDNP village, with a good-sized garden and no chain - are rarely available and are likely to attract considerable interest.

Buriton is a highly regarded village set within the South Downs National Park, offering an idyllic rural lifestyle with excellent access to the wider region. The village itself boasts a parish church, village pond and public house. The market town of Petersfield lies approximately two miles to the north, providing a comprehensive range of shops, restaurants, schools and a mainline railway station with regular services to London Waterloo. The A3 is readily accessible, offering swift connections to both Portsmouth and the capital.

# Jacobs & Hunt



Guide Price £550,000

EPC Rating 'TBC'

Heatherfield  
Buriton  
Petersfield  
GU31 5RY

| No Forward Chain | Requiring Modernisation | 938 SqFt Living Space |  
Driveway and Detached Garage | Attractive Mainly Laid Lawn | 20FT  
Living/Dining Room | Kitchen | Detached Bungalow | Three Bedrooms |  
South Downs National Park Village |

[www.jacobshunt.co.uk](http://www.jacobshunt.co.uk)

[properties@jacobshunt.co.uk](mailto:properties@jacobshunt.co.uk)

01730 262744