

**Jacobs & Hunt**

19 LOWER MEAD, PETERSFIELD, HAMPSHIRE, GU31 4NR  
ASKING PRICE OF £850,000





Very spacious detached house on Lower Mead, Petersfield that offers huge accommodation, being the largest style of four bedroom homes on the development, and within easy walking distance of the town centre and local schools.

The house offers so much - sitting room with fireplace with double doors leading to the dining room. There is a well constructed conservatory, study, snug room, large kitchen/breakfast room with adjacent utility room. There is also a recent ground floor shower room with WC.

On the first floor is a large master bedroom with separate ensuite dressing room and ensuite shower room.

Three further bedrooms and a brand new bespoke shower room.

To the rear is a large terrace which leads to a lovely lawned garden with summer house.

Integral garage and private driveway.

The property offers the benefit of no onward chain.



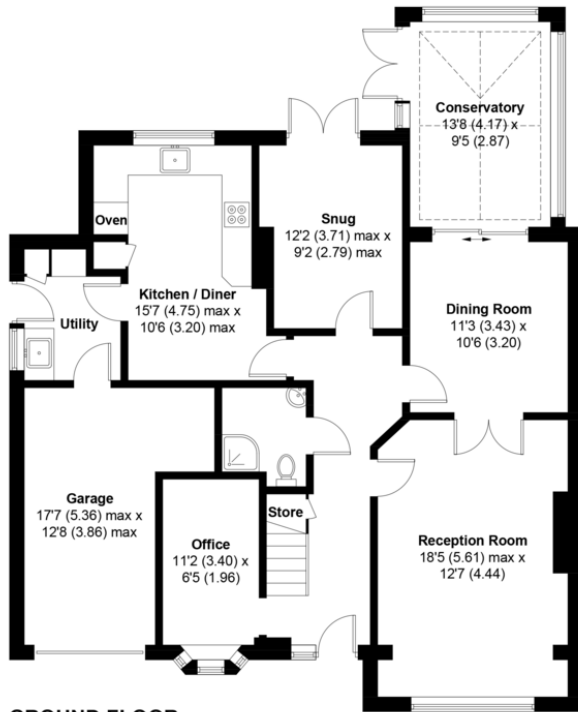
Gas central heating, mains water, gas and electricity.

Further information from Jacobs & Hunt, Petersfield.

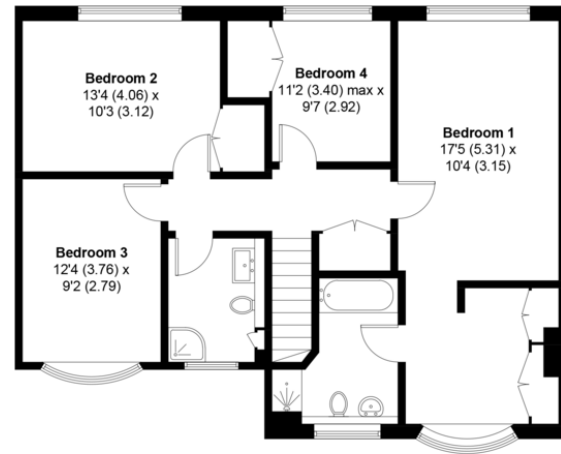


# 19, Lower Mead, GU31 4NR

APPROXIMATE GROSS INTERNAL AREA = 2168 SQ FT / 201.4 SQ M  
(INCLUDING GARAGE)



**GROUND FLOOR**



**FIRST FLOOR**

This plan is for layout guidance only. Not drawn to scale unless stated. Windows and door openings are approximate. Whilst every care is taken in the preparation of this plan, please check all dimensions, shapes and compass bearings before making any decisions reliant upon them. Created by Emzo Marketing (ID1143862)  
Produced for Jacobs & Hunt - Petersfield

Score	Energy rating	Current	Potential
92+	A		
81-91	B		
69-80	C		
55-68	D		65 D
39-54	E	52 E	
21-38	F		
1-20	G		

26 Lavant Street, Petersfield,  
Hampshire, GU32 3EF

www.jacobshunt.co.uk  
01730 262744  
properties@jacobshunt.co.uk

Agents Note: Whilst every care has been taken to prepare these particulars, they are for guidance purposes only. All measurements are approximate are for general guidance purposes only and whilst every care has been taken to ensure their accuracy, they should not be relied upon and potential buyers/tenants are advised to recheck the measurements

