

Rarely available building plot in West Meon village with detailed planning consent with a lovely garden and private parking for two cars.

The new house will benefit from sitting room, kitchen and dining room. Two large bedrooms both with ensuite facilities and a separate WC. A very dynamic house with state of the art construction and heating, located in a small cul de sac in the very heart of West Meon within walking distance of the beautiful open countryside.

The internal gross dimensions are approximately 133 square metres - 1,444 square feet. A new sewage treatment plant has already been installed.

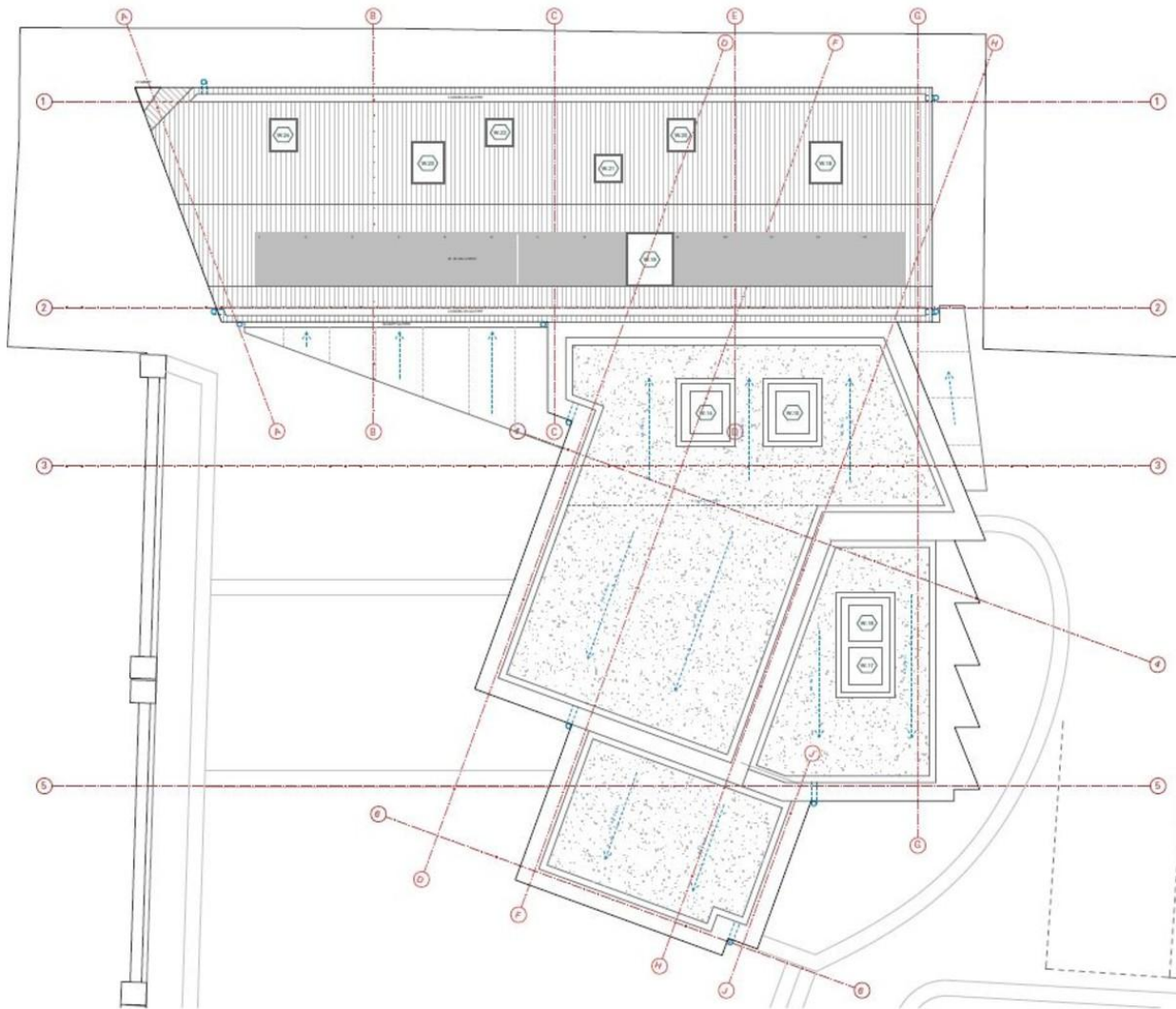
The Thomas Lord and local butcher are easily accessible and Petersfield is just 10 minutes drive.

This is a real opportunity to purchase a super plot with detailed planning at a realistic market value.

Further information from the Vendor's sole agents, Jacobs & Hunt.

WE ARE OPEN 7 DAYS A WEEK FOR YOUR VIEWING CONVENIENCE!





%epcGraph_c_1_381%

26 Lavant Street, Petersfield,
Hampshire, GU32 3EF

www.jacobshunt.co.uk
01730 262744
properties@jacobshunt.co.uk

Agents Note: Whilst every care has been taken to prepare these particulars, they are for guidance purposes only. All measurements are approximate and for general guidance purposes only and whilst every care has been taken to ensure their accuracy, they should not be relied upon and potential buyers/tenants are advised to recheck the measurements

