





Lovely, four bedroom detached family home in Monks Orchard, Petersfield – one of the most sought after locations - with easy pedestrian access to Petersfield town centre and the railway station. The house offers three reception rooms and four large double bedrooms. Perfect for extending across the garages to make a fantastic five bedroom house, subject to planning.

South facing and private rear garden. The house was redecorated throughout in October 2021.

The accommodation comprises of;

Entrance hallway with stairs to first floor, double aspect living room with open fireplace, large dining room, study, well fitted kitchen with views over the rear garden. Separate utility room with door leading to double garage with two up and over doors, ground floor WC.

On the first floor are four large, double bedrooms, two of which have hand basins. Modern family bathroom with shower over the bath.

Lovely, private, south facing rear garden with terrace with lovely side garden.

Double garage with private driveway.

No onward chain.

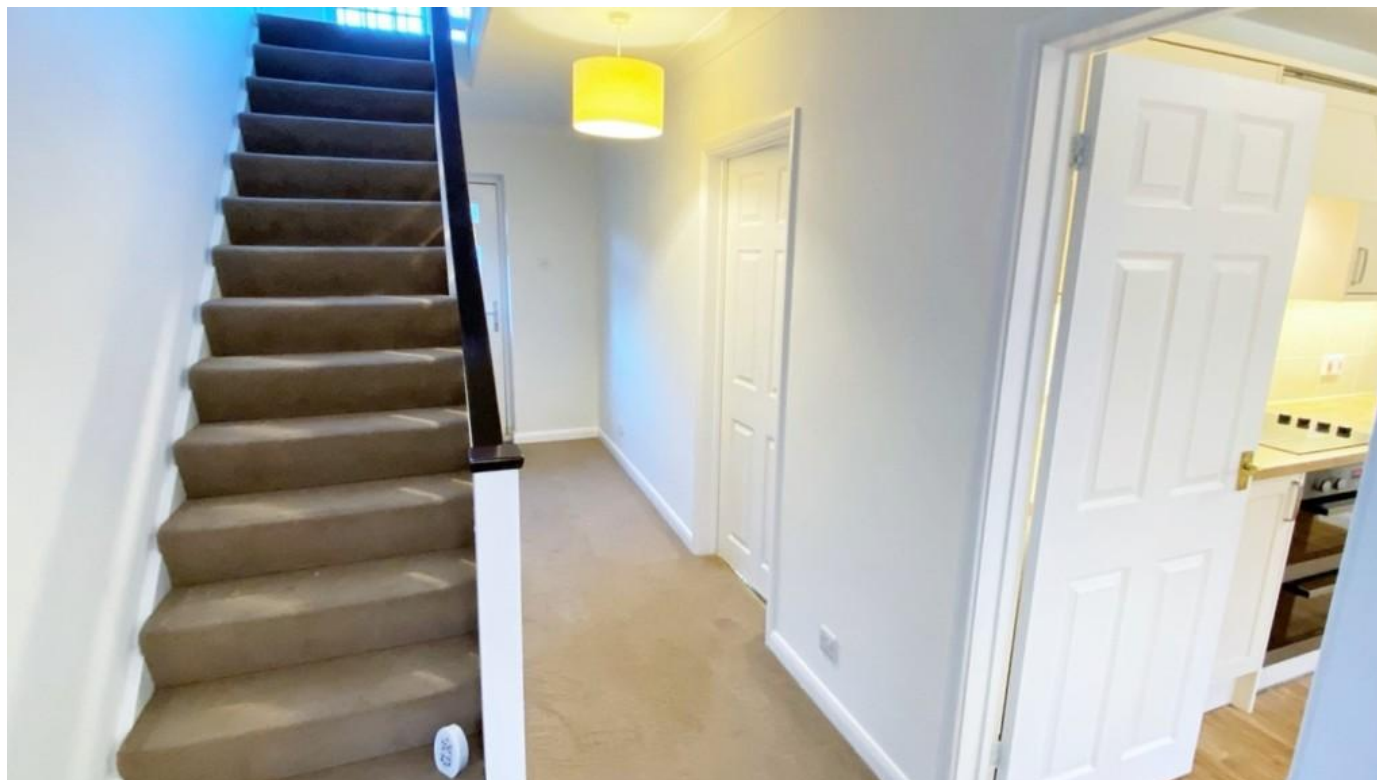
Gas central heating, double glazed windows, mains water and drainage.

Council Tax Band - G - £3219 per annum.



All enquiries through Jacobs & Hunt, Petersfield.

WE ARE OPEN 7 DAYS A WEEK FOR YOUR VIEWING
CONVENIENCE!



Monks Orchard, Petersfield

Approximate Gross Internal Area
(Including Double Garage)
176.7 sq m / 1902 sq ft

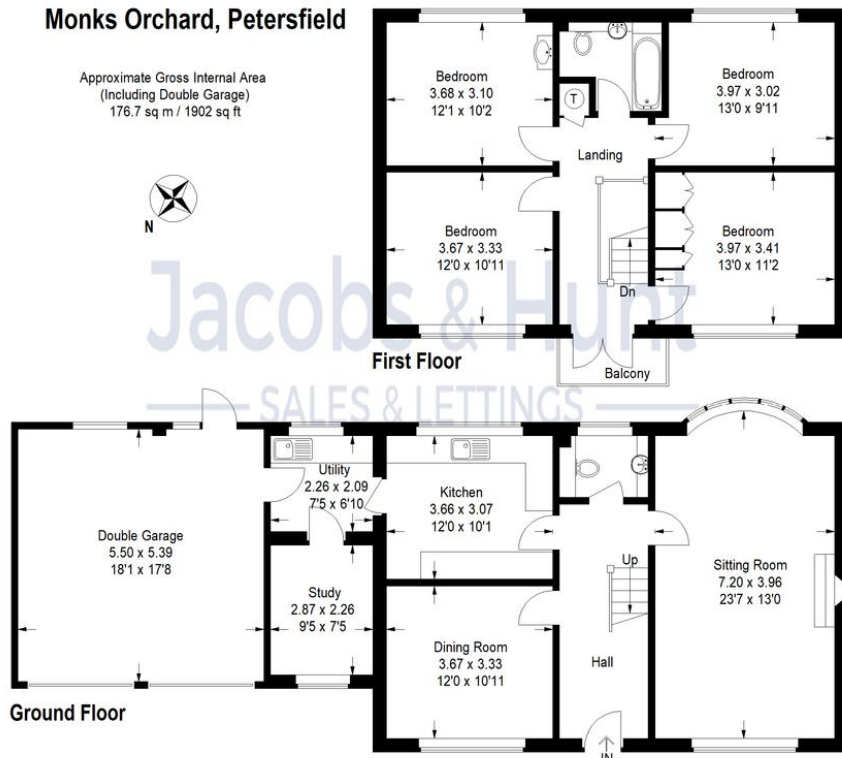


Illustration for identification purposes only, measurements are approximate, not to scale.



Score	Energy rating	Current	Potential
92+	A		
81-91	B		
69-80	C		69 c
55-68	D	61 D	
39-54	E		
21-38	F		
1-20	G		

26 Lavant Street, Petersfield,
Hampshire, GU32 3EF

www.jacobshunt.co.uk
01730 262744
properties@jacobshunt.co.uk

Agents Note: Whilst every care has been taken to prepare these particulars, they are for guidance purposes only. All measurements are approximate and for general guidance purposes only and whilst every care has been taken to ensure their accuracy, they should not be relied upon and potential buyers/tenants are advised to recheck the measurements

