





Four bedroom, three storey semi-detached house in Station Road, Liss, requiring refurbishment to turn back into a family home.

On the ground floor are four reception rooms and a small kitchen.

The first floor has four potential bedrooms and there is a large loft room on the second floor. First floor bathroom.

To the rear is a large tarmac parking area, perfect for garden creation with vehicular access.

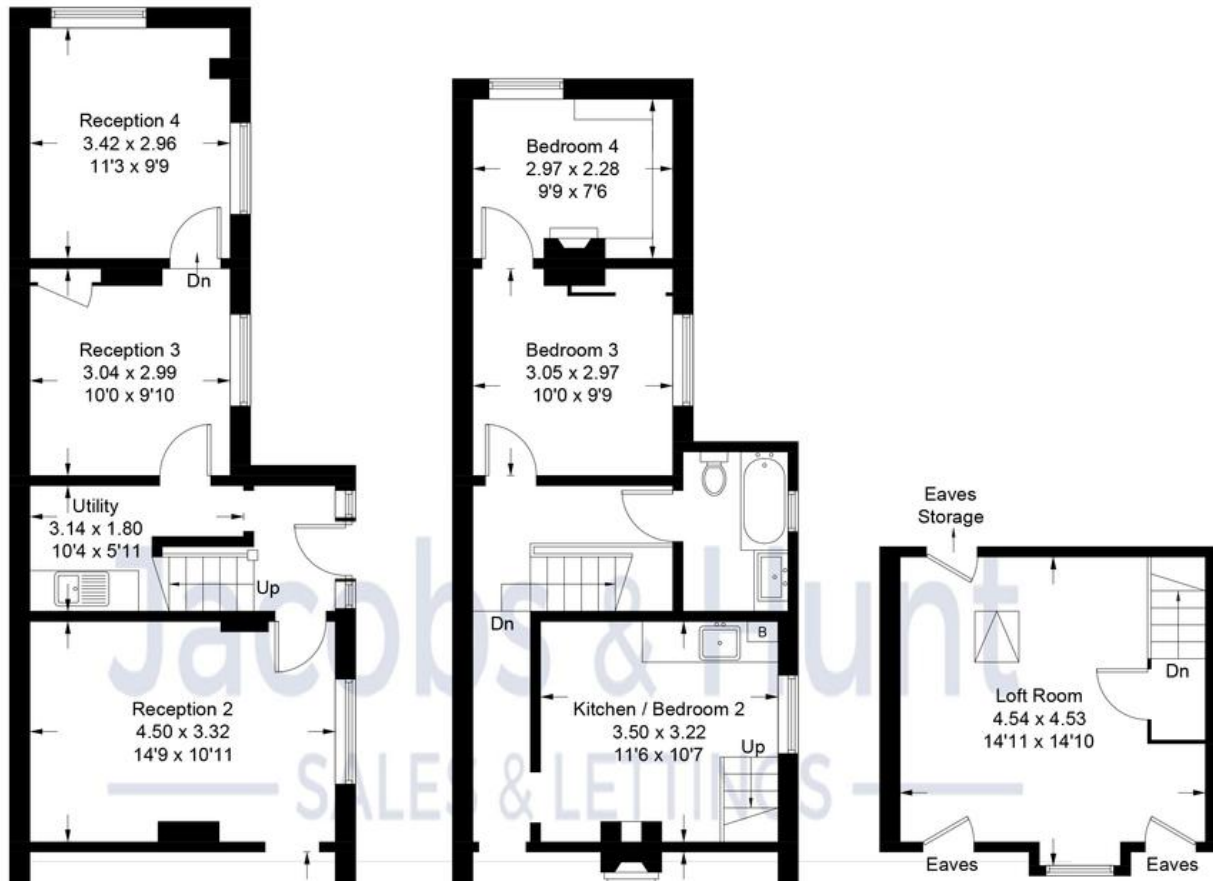
Gas central heating, mains drainage.





Station Road, Liss

Approximate Gross Internal Area = 151.8 sq m / 1634 sq ft



%epcGraph_c_1_381%

26 Lavant Street, Petersfield,
Hampshire, GU32 3EF

www.jacobshunt.co.uk
01730 262744
properties@jacobshunt.co.uk

Agents Note: Whilst every care has been taken to prepare these particulars, they are for guidance purposes only. All measurements are approximate and for general guidance purposes only and whilst every care has been taken to ensure their accuracy, they should not be relied upon and potential buyers/tenants are advised to recheck the measurements



Zoopa rightmove onTheMarket