





A lovely two bedroom split level maisonette just a few minutes walk from Petersfield main line railway station and the excellent facilities that Petersfield town centre offers.

The property has a private entrance with stairs leading to first floor.

Large living/dining room with bay window. Kitchen with an excellent range of fitted units, electric cooker with extractor hood, dishwasher and free standing fridge/freezer.

Second bedroom being a good size double with built in wardrobe.

Stairs to top floor, large main bedroom with built in wardrobe. Mezzanine style overlooking the living room.

Large bathroom comprising bath, wash hand basin, separate shower cubicle and washing machine.

**Double glazed, Electric heating. Unfurnished.**

**Sorry - strictly no pets.**

**COUNCIL TAX BAND C £1888 PER ANNUM (2019/2020).**

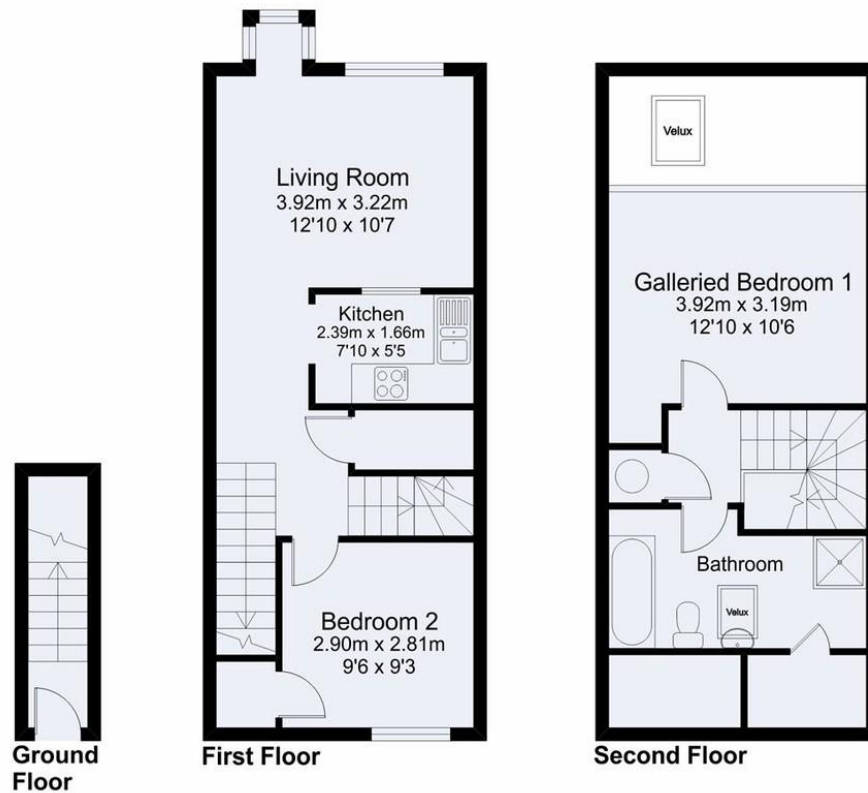
Available 28th February 2025.

Further information from Jacobs & Hunt, Petersfield.

**WE ARE OPEN 7 DAYS A WEEK FOR YOUR VIEWING CONVENIENCE!**



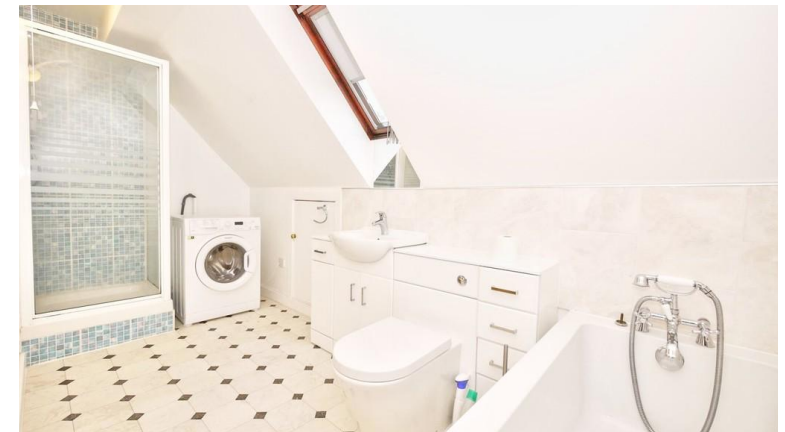




**Meon Close, Petersfield**

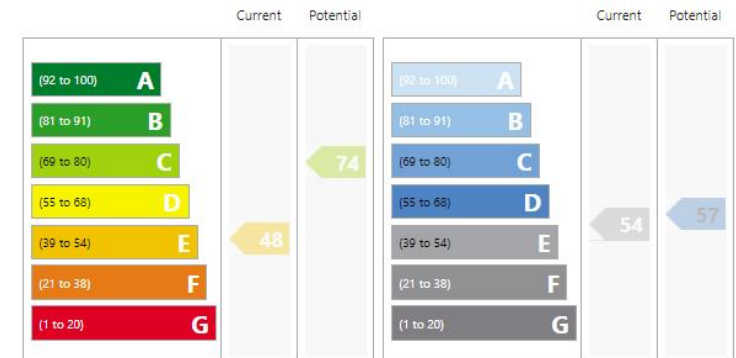
Total Approx Gross Internal Floor Area = 74 Sq/m - 797 Sq/ft

FOR IDENTIFICATION PURPOSES ONLY - NOT TO SCALE - REF = 519/0454 - © www.homeplansepcc.co.uk 2016



**Energy Efficiency Rating**

**Environmental Impact Rating**



26 Lavant Street, Petersfield,  
Hampshire, GU32 3EF

www.jacobshunt.co.uk  
01730 262744  
properties@jacobshunt.co.uk

Agents Note: Whilst every care has been taken to prepare these particulars, they are for guidance purposes only. All measurements are approximate and for general guidance purposes only and whilst every care has been taken to ensure their accuracy, they should not be relied upon and potential buyers/tenants are advised to recheck the measurements

